



23rd Transport Sector Coordinating Committee Meeting

8-9 June 2026 | Ulaanbaatar, Mongolia

23-е заседание Координационного комитета по транспортному сектору

8-9 июня 2026 года | Улан-Батор, Монголия



Strategic Utilization of the Corridor Performance Measurement and Monitoring (CPMM) and the Asian Transport Observatory (ATO)

MTR explicitly highlights strengthening the CAREC knowledge architecture and identifies a role for the CAREC Institute in supporting transport knowledge, analytics, and emerging initiatives such as the Transport and Logistics Center.

Ghulam Samad
Chief of Research Division
CAREC Institute

Sudhir Gota/ Alvin Mejia
Co-Team Lead
Asian Transport Observatory

23rd Transport Sector Coordinating Committee Meeting

8–9 June 2026 | Ulaanbaatar, Mongolia



23-е заседание Координационного комитета по транспортному сектору

8-9 июня 2026 года | Улан-Батор, Монголия



- Home
- Data
- Analytical Outputs
- Insights
- Platforms
- In the Loop

Developed with the support of



Knowledge base on transport in Asia-Pacific

A leading platform that gathers and shares comprehensive datasets, generate unique policy insights, and delivers novel knowledge products rooted in groundbreaking analysis.



ATO National Database

Explore over 450 transport indicators from 52 economies divided across nine categories



ATO National Transport Policy Documents Database

Explore close to 1100 transport policy documents in Asia and the Pacific



ATO Urban Database

Explore more than 260 urban level transport indicators across nine categories



ATO Analytical Outputs

Read about analysis made using ATO transport data and policy information



ATO Cost Database

Explore more than 1,300 transport-related projects and benchmark their costs within subregions or income groups in Asia and the Pacific

23rd Transport Sector Coordinating Committee Meeting

8-9 June 2026 | Ulaanbaatar, Mongolia



23-е заседание Координационного комитета по транспортному сектору

8-9 июня 2026 года | Улан-Батор, Монголия



Asian Transport 2035 Outlook: Investment Needs of Asian LMICs



The Asian Transport 2035 Outlook estimates that low- and middle-income economies in Asia and the Pacific will need about US\$2.6 trillion per year for transport infrastructure between 2025 and 2035, more than triple past annual investment levels. It highlights the need to fund not only new infrastructure, but also maintenance, safety, rail, ports, airports, airport mobility, climate resilience, and better prioritization.

Asia and the Pacific Transport Development Finance Explorer



The Asia and the Pacific Transport Development Finance Explorer is a new interactive ATO platform that makes transport development finance data easier to explore and use. Built mostly around OECD Creditor Reporting System data, and results of qualitative assessment through the Accelerating Innovation in Transport, under the Pathways for Decarbonization of the Transport Sector project supported by the UNFCCC.

Climate Exposure Dashboard for Transport



With support from European Space Agency and ADB through the Global Development Assistance Program, the Asian Transport Observatory, in collaboration with UNEP, is developing a prototype Climate Exposure Dashboard for Transport. The tool combines Earth observation data with open geospatial datasets to visualize where major road networks, particularly interstates, may be exposed to flood hazards across the region.

Transport in Review: Working Paper Series



The Transport in Review series provides concise, evidence-based snapshots of transport trends, policies, and priorities across Asia and the Pacific. It brings together data and analysis from the Asian Transport Observatory to help countries and partners understand progress, identify gaps, and support more informed transport planning and investment decisions.

Visit the ATO portal

asiantransportobservatory.org

Contact us

info@asiantransportobservatory.org

Asian Transport Observatory



Pacific Transport Observatory

Knowledge base on transport in the Pacific

A Pacific-focused platform of the Asian Transport Observatory that gathers and shares comprehensive datasets, generate unique policy insights, and delivers novel knowledge products rooted in groundbreaking analysis.



Latest insights

Passenger Transport Emissions Pathways (PATH) model by World Bank
Passenger Transport Emissions Pathways (PATH) model, a framework developed by the World Bank's Transport and Logistics Unit.

Pacific Regional Dashboards
Pacific Regional Dashboards

A Snapshot of Recent Fuel Price Shifts
Recent fuel price movements are unfolding against the backdrop of renewed geopolitical tensions that have heightened global oil markets and heightened supply uncertainty. For Asia

Climate Exposure Dashboard for Transport
Transport systems across Asia and the Pacific are increasingly exposed to climate-related hazards, particularly flooding. Understanding where transport infrastructure is vulnerable to becoming an important ...

ATO Data and Information Catalog

VEHICLE Found 113 items

Databases:

- All
- National Database
- Urban Database
- Policy Documents
- Cost Database
- Analytical Outputs
- Unstructured Data

Vehicle registration (Others) [IAS-UB-05A-NI]
Vehicle categories excluding freight vehicles (LCV, trucks) and passenger vehicles (motorized 2W, 3W, LCV, 1W, minibus and buses).
Mode: Road
Source: [Download]

Platform developed with the support of



Pacific Transport Observatory

The Pacific Transport Observatory platform has been integrated into the ATO website to serve as a dedicated space for accessing data, tools, knowledge products relevant to the Pacific sub-region and the Pacific Island Countries. It also features a new subsection called "Data and Information Catalog" which houses non-ATO formatted data, and related information assets, in addition to the data in the ATO public forum and indicator archives. The development of the portal was supported by the World Bank, through the Accelerating and Operationalization of Road Transport in Pacific Island Countries and the Pacific Island's programmatic advisory services and analytics (PASA) in addition to the support being provided by the Asian Development Bank and the Asian Infrastructure Investment Bank to the ATO.



Developed with the support of



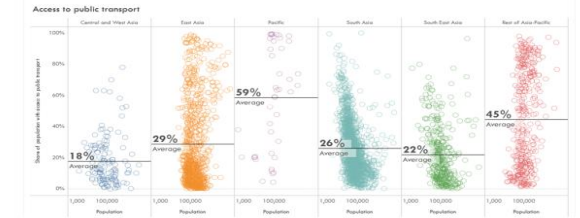
PALAU

COUNTRY DASHBOARD

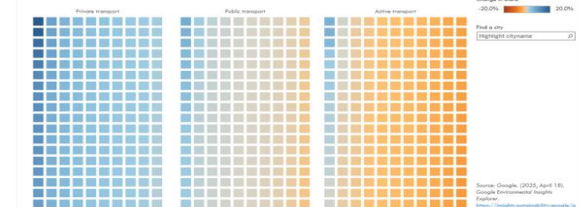
Ensure access to sustainable transport for all | Advance low- or zero-carbon, resilient, and environmentally sound transport systems | Enhance efficiency

Ensure access to sustainable transport for all

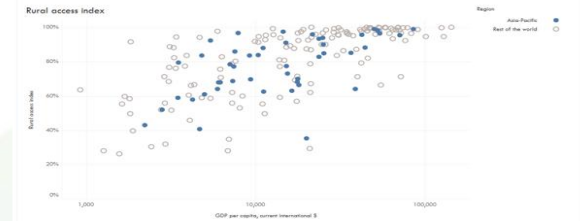
Public transport access



Modal shift in cities



Rural access index



Source: Central for International Earth System Information Network (CIESIN), SDG Indicator 11.1: The Rural Access Index (RAI), 2013 Release. Sustainable Development Goal Indicators (SDG) | ADB.

Export PDF | Export Image

Country Dashboards for the UN Decade of Sustainable Transport

These country dashboards provide a concise, country-level view of transport trends, policies, and priorities across Asia and the Pacific. Drawing on information available through the Asian Transport Observatory portal, each dashboard brings together key data and insights around the priority areas of the UN Decade of Sustainable Transport. The dashboards are designed to help governments, development partners, researchers, and practitioners quickly understand where each country stands, what progress is being made, and where further action may be needed.



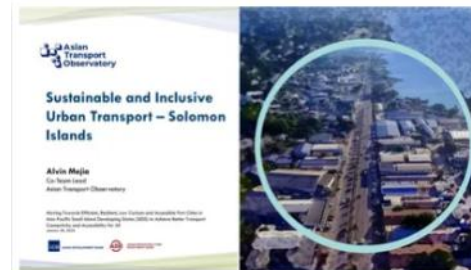
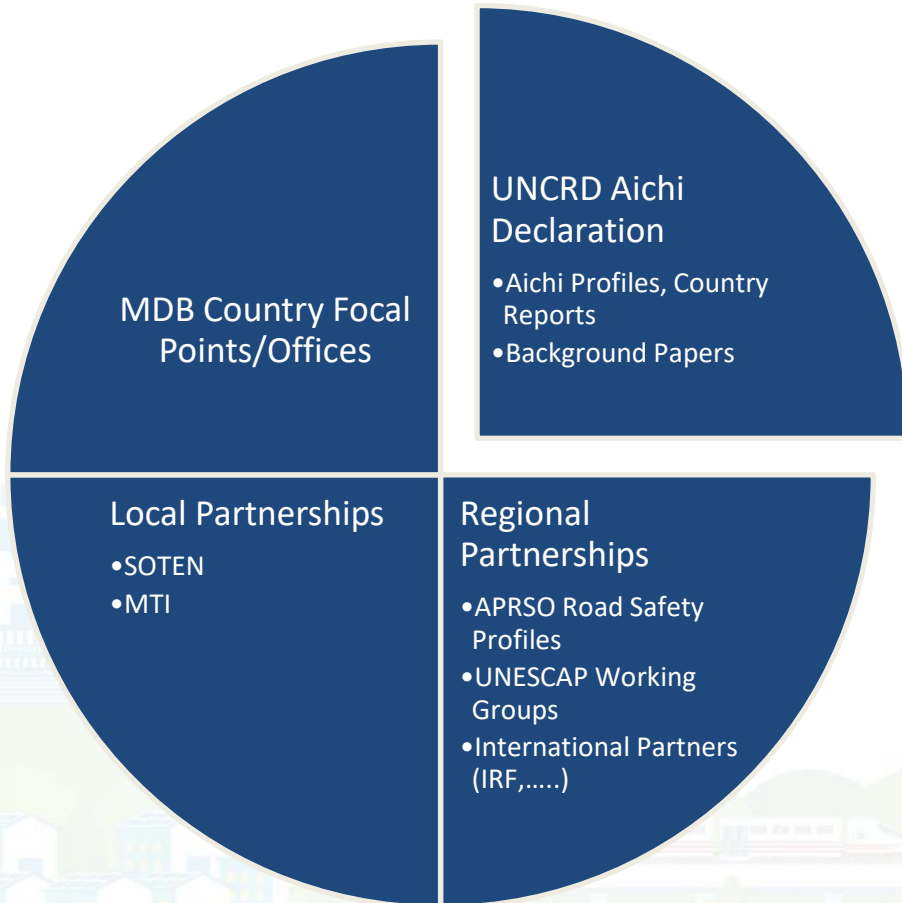
23rd Transport Sector Coordinating Committee Meeting

8-9 June 2026 | Ulaanbaatar, Mongolia



23-е заседание Координационного комитета по транспортному сектору

8-9 июня 2026 года | Улан-Батор, Монголия



2026
ATO Presents Findings - National Workshop for Solomon Islands

2026-01-28
 Online



2025
ATO Contributes Evidence Base to Regional Dialogue on Scaling Up E-Mobility Finance in Asia-Pacific

2025-12-01
 Bangkok, Thailand



2025
ATO Contributes to the ADB Transport Data Forum

2025-11-30
 Manila, Philippines



2025
ATO Joins ESCAP Technical Advisory Group to Support Low-Carbon and Resilient Transport Action Plans

2025-10-20
 Online



2025
ATO at the Asia-Pacific Road Safety Conference 2025

2025-09-09
 Manila, Philippines



2025
ATO Contributes to ADB's Advancing Transport Leadership Program

2025-05-12
 Tokyo, Japan

- i. identifies causes of delays and unnecessary costs along the CAREC corridor, including border-crossing points and intermediate stops.
- ii. helps authorities determine where and how to address identified bottlenecks.
- iii. assesses the impact of regional cooperation initiatives.
- iv. CPMM uses **actual truck and train movement data**, not perceptions or surveys—making it especially valuable for policy decisions.



A Future Agenda for CPMM–ATO Collaboration: Key Suggestions

1. Joint Annual CAREC Transport and Corridors Knowledge Products

Combine CPMM operational data with ATO data and analytics.

2. Thematic Knowledge Products

One priority theme selected annually by ADB/CI/member countries.

3. Country-Specific Insights (CSI)

Customized analytical briefs for each CAREC member.

Translate regional datasets into country policy recommendations.

4. Research and Knowledge Platform

Joint CPMM-ATO database for researchers and policymakers.

Support CAREC Institute studies and TSCC policy discussions.

Encourage country ownership and use of data.

5. Interactive CAREC Corridor Dashboards

6. Utilization of the databased for the CAREC Trasport Model.

23rd Transport Sector Coordinating Committee Meeting

8–9 June 2026 | Ulaanbaatar, Mongolia



23-е заседание Координационного комитета по транспортному сектору

8-9 июня 2026 года | Улан-Батор, Монголия

Thank you

