



Central Asia Regional Economic Cooperation Program



ASIA-PACIFIC
ROAD SAFETY
OBSERVATORY

Road Crash Data Review and Reporting

Training on improvement to crash data management

Istanbul - 25-27 June 2024

SAFE SYSTEM: ROAD INFRASTRUCTURE SAFETY

Antonino Tripodi

Road Crash Data Management Expert
FRED Engineering

Group work A

This group work has the purpose of assessing how the Safe System approach is integrated in your country concerning:

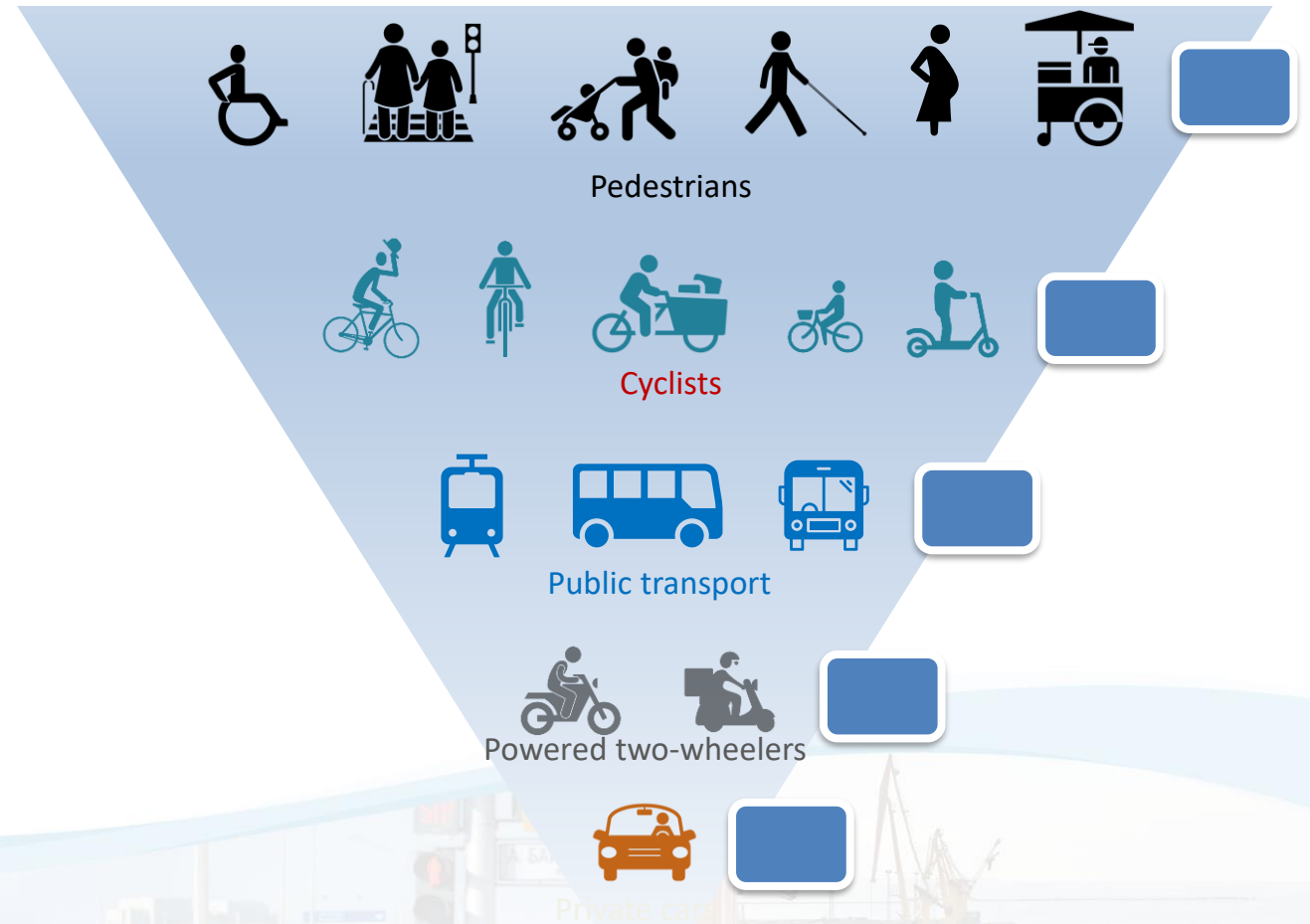
Road infrastructure safety

Referring to the topics in the following slides, please, think to your country and provide your judgement.



Human-centered design of road infrastructures

- What type of road user is currently prioritized during road design?
 - Tick the box corresponding to the road user in the pyramid.



Human-centered design of road infrastructures

- Most of the roads and roadsides in my country are free from hazards
- In higher speed environments most of roads and roadsides are free from fixed objects
 - Rigid structures, trees, stopped/parked vehicles, etc.

Tick the box better corresponding to your judgement

VERY FEW
ROADS

FEW
ROADS

SOME
ROADS

MANY
ROADS

ALMOST
ALL ROADS

Road environment safety (2)

- Looking at the image below, judge the level of safety of the road environment



Tick the box better corresponding to your judgement

VERY LOW

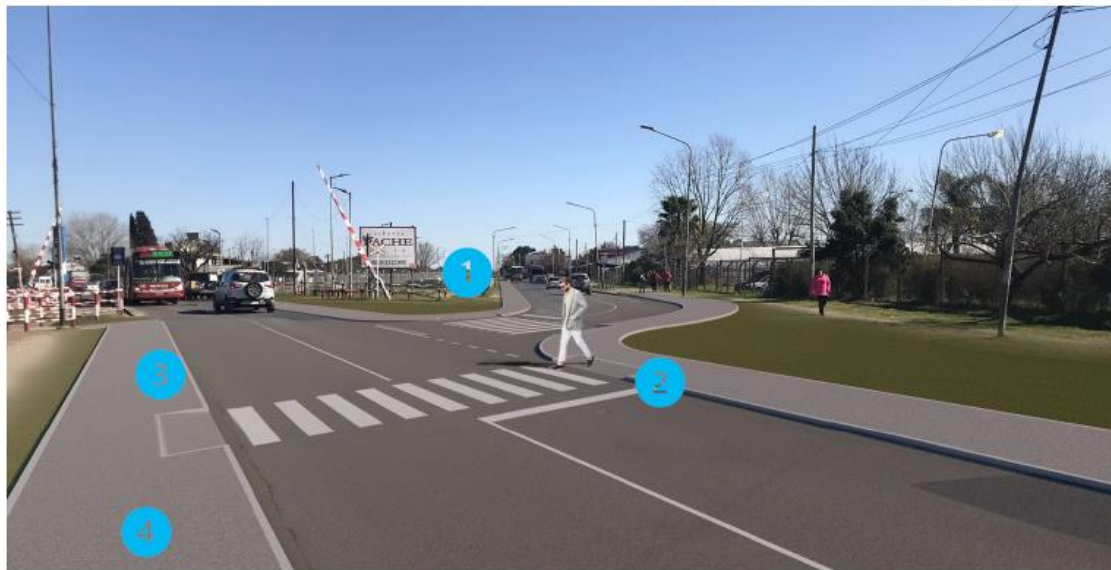
LOW

SUFFICIENT

HIGH

VERY HIGH

Road environment safety (1)



Road environment safety (1)

- Looking at the image below, judge the level of safety of the road environment



Tick the box better corresponding to your judgement

VERY LOW

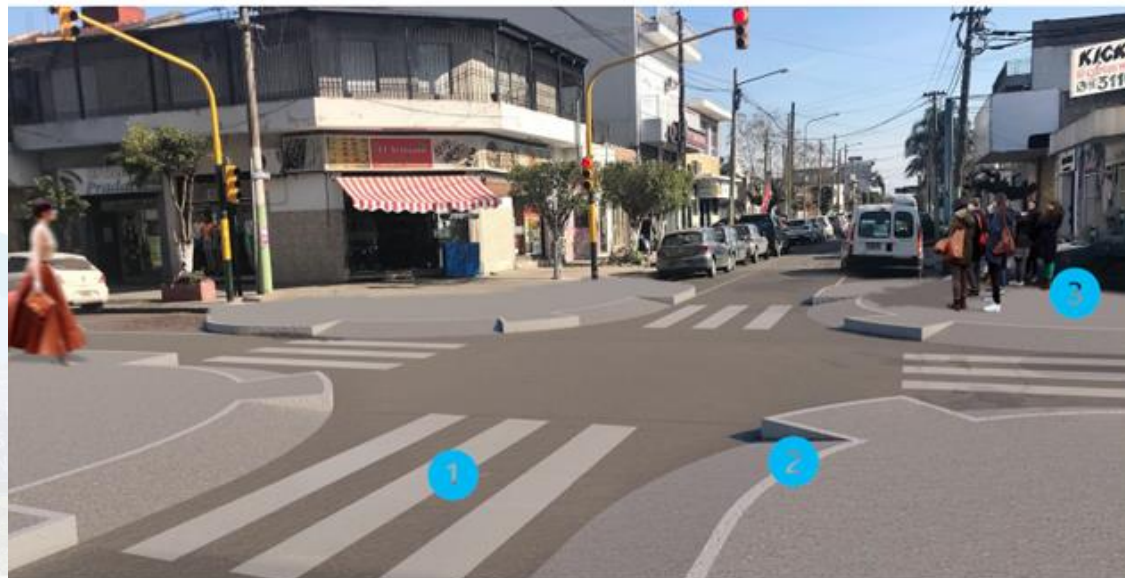
LOW

SUFFICIENT

HIGH

VERY HIGH

Road environment safety (2)



Road environment safety (Amalty)

Mark the road safety issues directly in image

