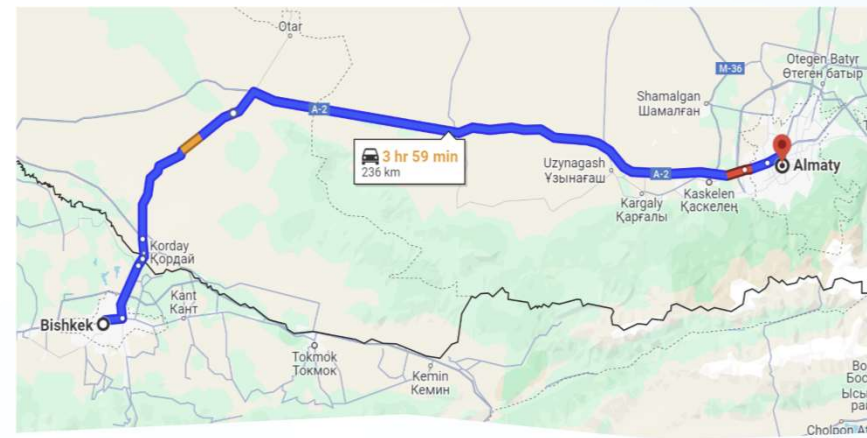
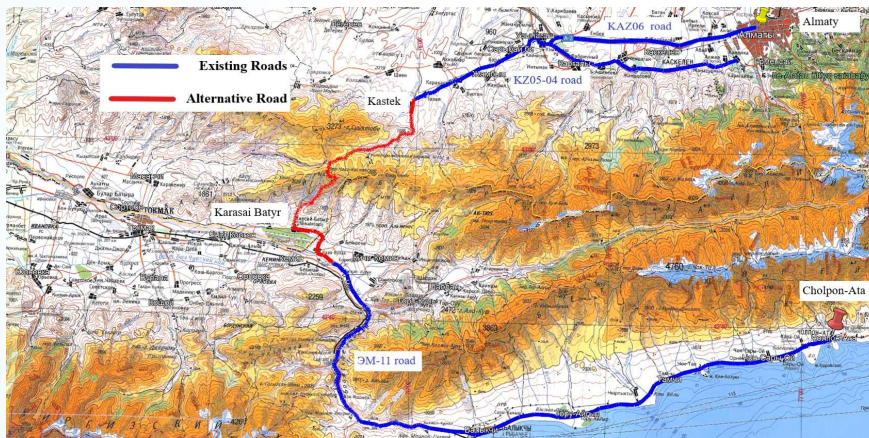


Almaty-Bishkek Economic Corridor

The CAREC Business Forum

Session 3. Public-Private Partnership for Infrastructure Development and Regional Connectivity



Mibo Ahn

Markets Development Advisory Specialist
Asian Development Bank

The **Office of Markets Development and Public-Private Partnership (OMDP)** was established to enhance the role of the Asian Development Bank in supporting and enabling governments of its developing member countries **to secure greater private investment and foster dynamic private sector-led growth** across Asia and the Pacific.



Advocate and engage stakeholders for Private Sector Development




Provide advisory services for private investment and capital mobilization





Strategize, formulate, and build capacity for our Developing Member Countries






CENTRAL ASIA REGIONAL ECONOMIC COOPERATION DESIGNATED RAIL CORRIDORS


	Kazakhstan
KAZ	Hydropower PPP Program
KAZ	Karaganda Medical University Hospital
KAZ	Almaty Student Accommodation


	Kyrgyz Republic
KGZ	Kyrgyzstan Wind PPP
KGZ	Green Data Center PPP


	Azerbaijan
AZE	Hovsan Wastewater Treatment and Reuse

		Cross-border projects
KAZ-KGZ		Almaty-Bishkek E-Bus
KAZ-KGZ		Almaty-Issyk-Kul Alternative Road

	Tajikistan
TAJ	JSC EDN Management Contract

	Mongolia
MON	Solar Generation with BESS

	Uzbekistan
UZB	Bukhara District Heating Network
UZB	Tashkent City Solid Waste Management
UZB	Tashkent Region Schools Project
UZB	Regional Preschools PPP in 5 regions
UZB	Hospital PPP - Andijan
UZB	Hospital PPP - Bukhara
UZB	Hospital O&M PPP in 5 hospitals
UZB	Sherabad Solar PV Project
UZB	Guzar Solar PV Project
UZB	Namangan Wastewater Treatment Plant
UZB	Tashkent District Heating
...	

	Pakistan
PAK	Lower Spat Gah Hydropower Project
PAK	West Karachi Recycling Water Project 1
PAK	Karachi Wastewater Treatment Plant 4
PAK	Islamabad Capital Hospital PPP
PAK	Riverine Forest Carbon PPP Project
PAK	Railways Assets Solarization Project
...	



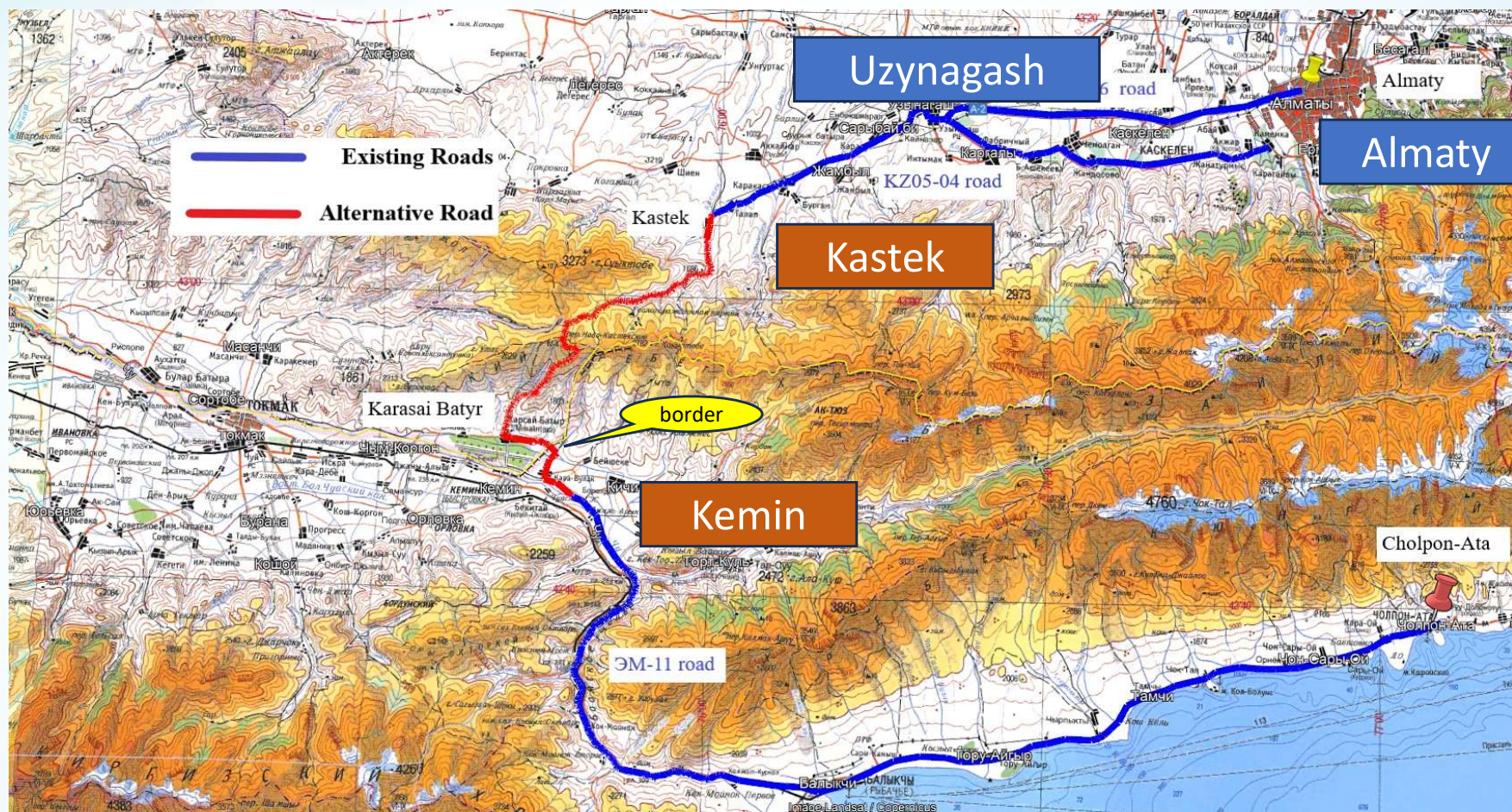
**STRONGER
TOGETHER**

1

Almaty-Issyk-Kul Alternative Road Construction Project

The Project

STRONGER
TOGETHER



- A greenfield toll road PPP project to directly connect Almaty and Issyk-kul Lake
- Length: 68km ~ 73km (with further adjustment after geo-technical surveys)
- A new Border Crossing Point (BCP) proposed in Karasay Batyr - Kemin

Feasibility study progress

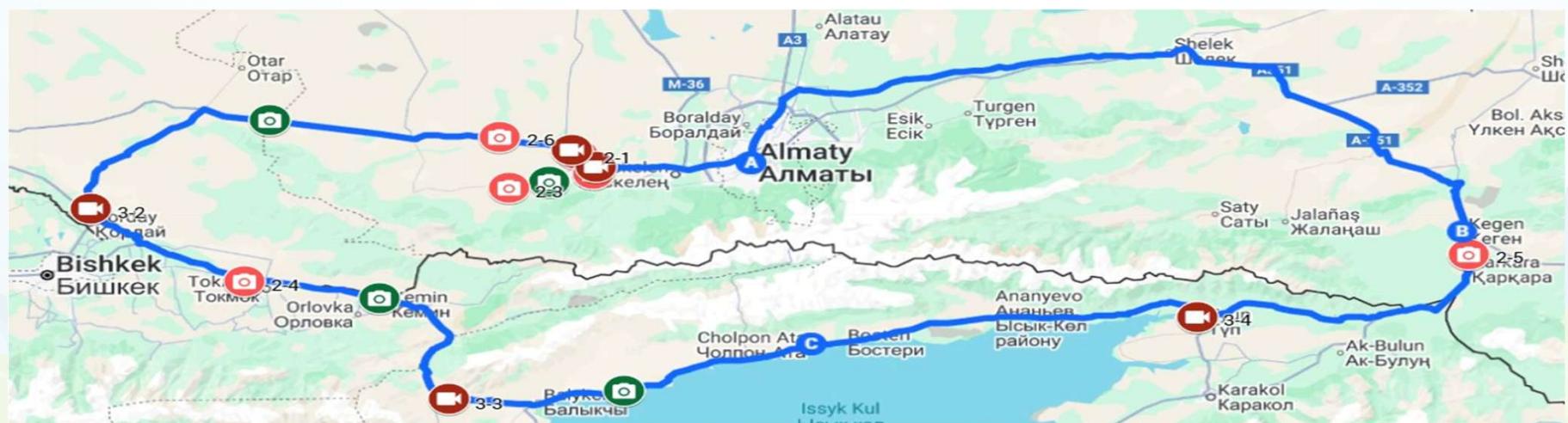
**STRONGER
TOGETHER**

1. Site surveys

- Terrain conditions
- Water flows from snowmelt
- Archaeology studies
- Electricity line

2. Traffic surveys

- Origin–Destination (O–D) Survey: 384 respondents
- Willingness-to-Pay Survey: 288 respondents



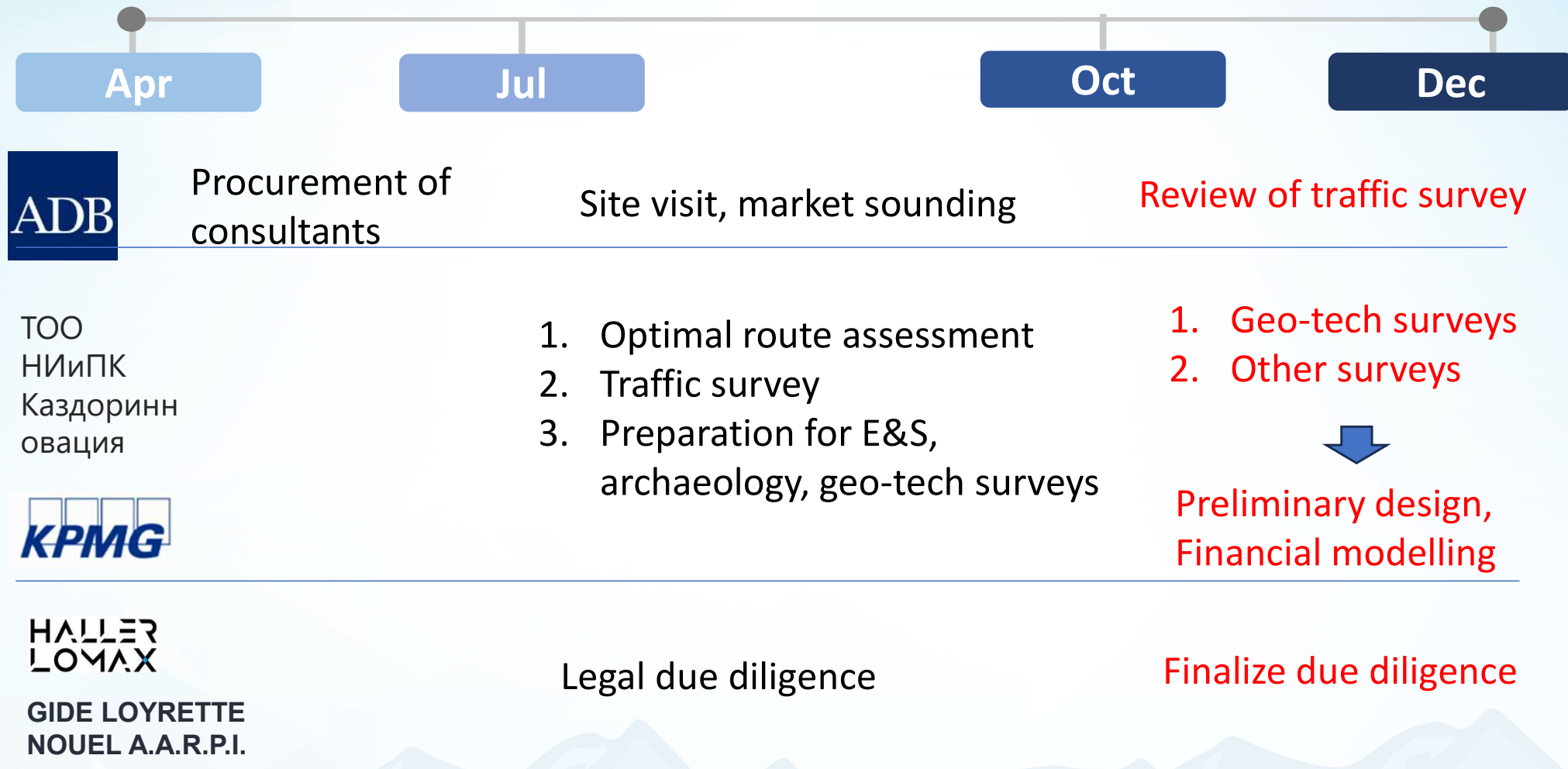
Key Findings:

- **Strong investor interest** in the proposed project, but all emphasized need for **revenue protection** due to traffic risk and seasonality.
- Preferred models:
 - **Minimum Revenue Guarantee (MRG) or Availability Payment.**
 - **Government-managed tolling** to reduce leakage risk.
- Common concerns:
 - Low tariff levels and **low willingness to pay.**
 - **High toll leakage** and political risk.
 - **FX and indexation risk** on local currency revenues.
 - Complex **cross-border coordination** and BCP delays.



Schedule

STRONGER
TOGETHER



Target to achieve Feasibility Study approval by state expertise by Mar 2026 and launch the competitive PPP tender during 2H 2026.

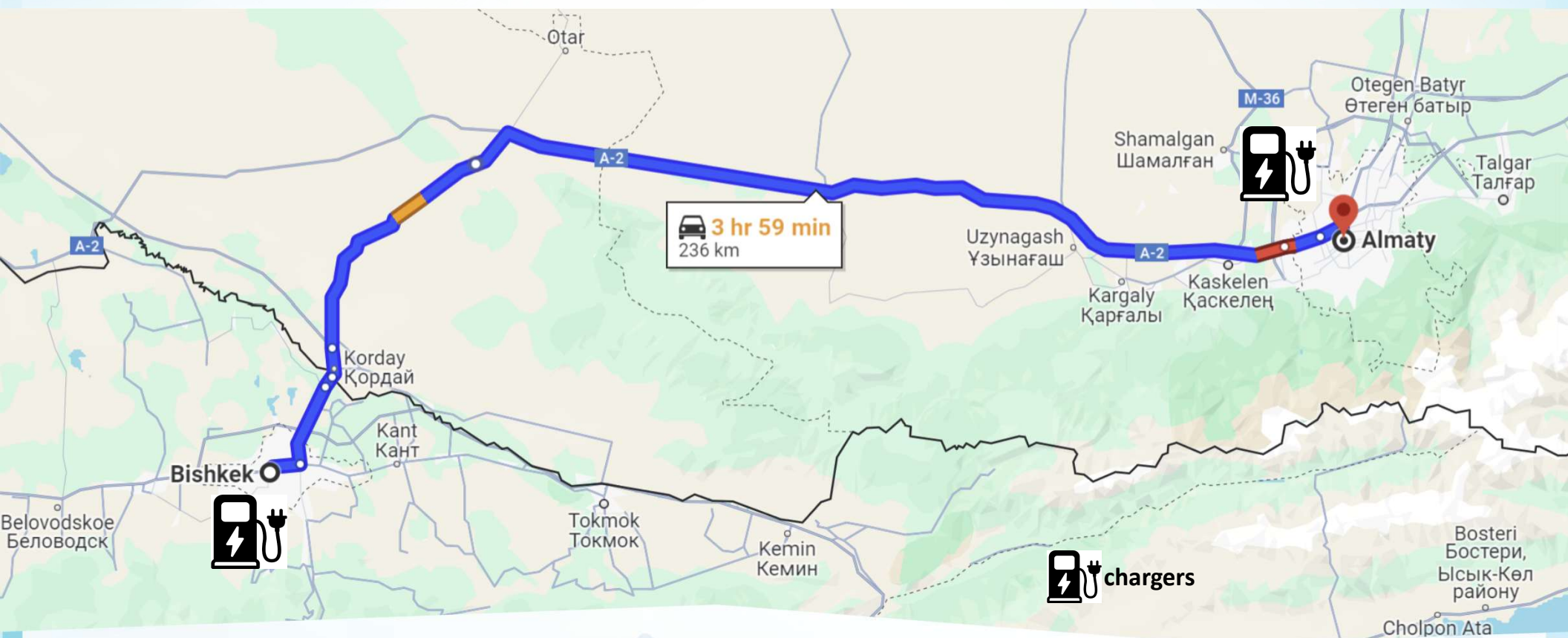


**STRONGER
TOGETHER**

2

Almaty-Bishkek E-Bus Project

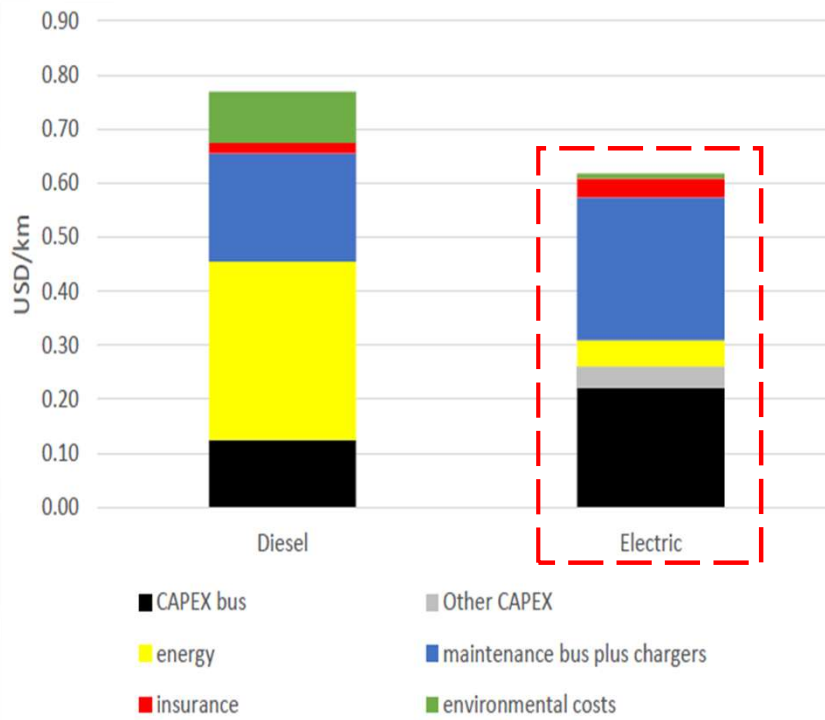
- Regular Electric Bus Project between **Almaty** and **Bishkek** crossing Korday Ak-zhol (BCP)



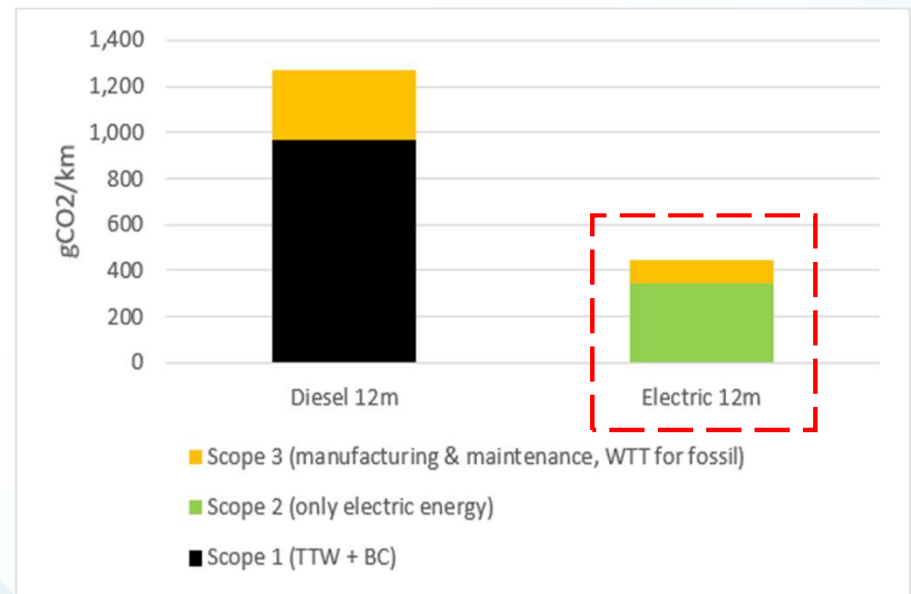
Max gradient	7.2%	Daily distance per bus	240km
Travel time	4h	Bus battery capacity	360-420kWh
Road conditions	Paved, 2-4 lanes	Bus capacity	45 people

- Increasing number of e-bus suppliers, charger speed ↑
- Decreasing battery size, 360 kWh sufficient for 1-way trip without re-charge
- **E-buses outperform diesel buses** both economic and environmental assessment

Cost Break-Down per Bus



Life-Cycle GHG Emissions

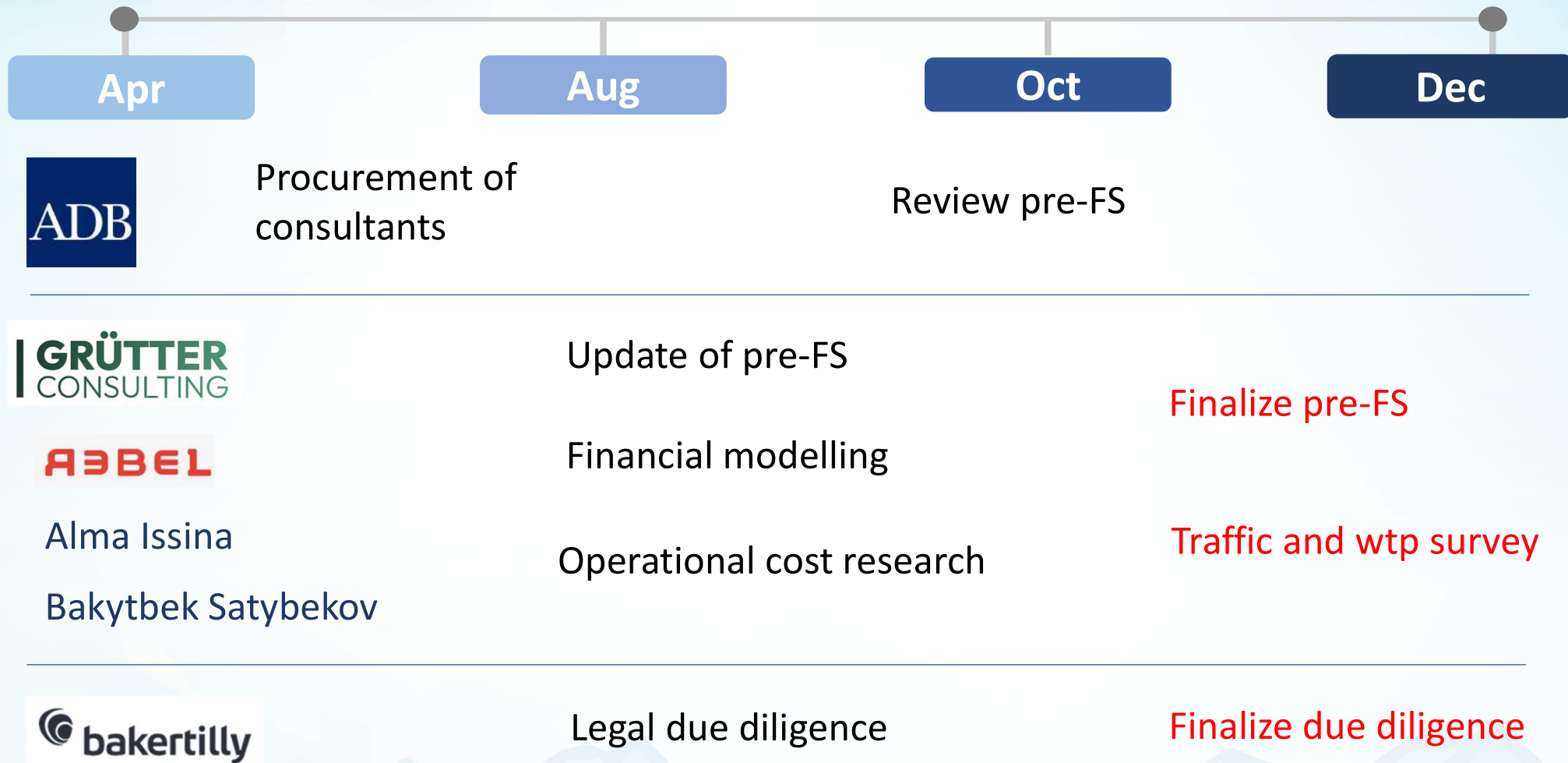


TTW = tank-to-wheel (combustion) emissions; BC = Black Carbon emissions
WTT = well-to-tank emissions (fuel extraction, refinery and transport)
Source: Grutter Consulting; see Annex for details



Schedule

STRONGER
TOGETHER



Target to finalize pre-Feasibility Study and legal regime by Mar 2026 and launch the operator selection during 2H 2026.



**STRONGER
TOGETHER**

Thank you

Mibo Ahn mahn@adb.org

Botagoz Vaissova bvaissova@adb.org