



Customs Administration of the Kyrgyz Republic

National digital platform «Smart bazhi»

2025-11-18
Bishkek





Digital Transformation



Decree of the President of the Kyrgyz Republic "On support of small and medium-sized enterprises"



Concept of Customs Service Development



Optimization of customs processes



Application of the one-stop-shop principle at the border



Identifying Customs as the single coordinating body at border crossing points

**SMART
BAZHI**



Facilitating foreign trade



Ensuring efficiency of foreign economic activity



Implementing measures to protect economic security



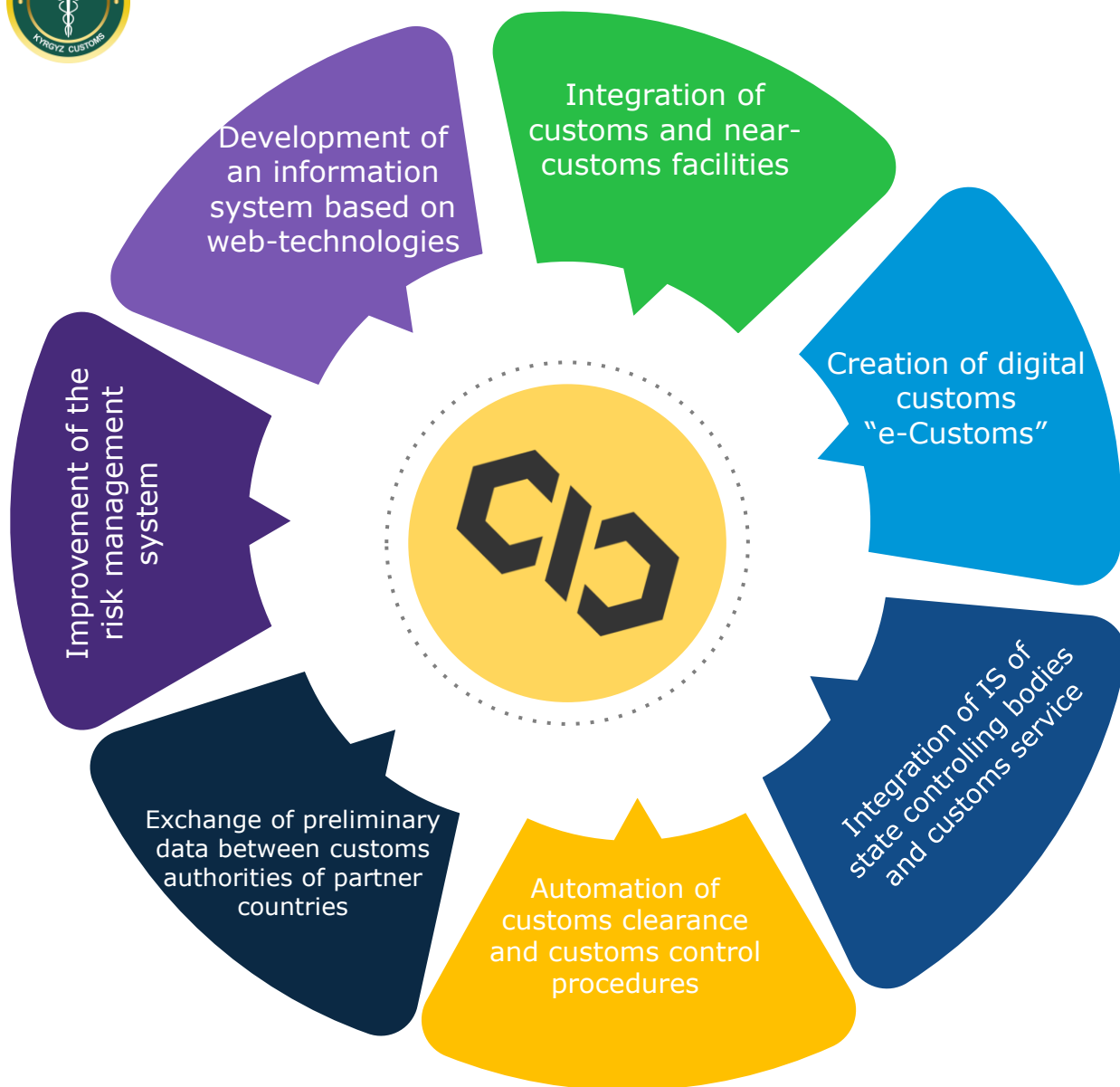
Minimizing official-business contacts



Balancing simplification and control



Eliminating subjectivity and ensuring transparency in customs processes



«SMART BAZHI»

Risk management



Electronic declaration and autodeclaration



Transparent control and accounting of goods



Automation of control processes

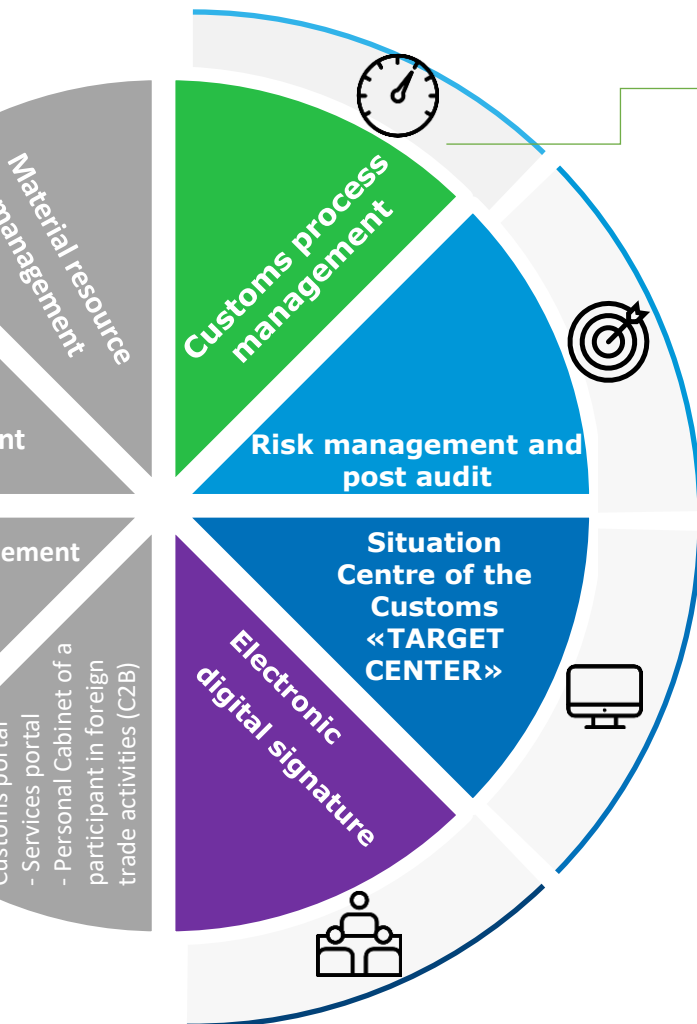


Data exchange system and electronic payments





Structure of the New System



1.1 The goods and vehicle registration unit at the BCP

1.2. Measurement of transit and release times (TRS)

1.3. Customs clearance. e-Declaration

1.4. Preliminary information. Brief declaration

1.5. Declaration for natural persons persons

1.6. . e-Commerce. Accounting and control of internet commerce

1.7 The offence and canine unit

1.8. System on customs processes

1.9 Financial operations regulated by the customs service and collection of payments

1.10. Automation of commodity code, tariff and non-tariff regulation

1.11. Statistics reporting and data analysis

1.12. Introduction of GPS delivery locks

1.13. . Customs expertise. e-Lab

1.14. Accounting system of goods in storage

1.15. Electronic vehicle queue at the BCP

1.16 . Integration with Customs technical controls

1.17. Integration with public authorities (C2G)

1.18 . Integration with passport control

1.19. . Broker registration and management unit

1.20. Data exchange with countries partners (C2C)



Optimization of Processes at the Border Crossing Point

PI feed



Interaction with FEA participant



Data exchange with partner countries



Sanarip Tamga / SW

1010011010
0100001010

Smart Bazhi

1010011010
0100001010
1001111011

RMS



Data exchange with state authorities



SINGLE WINDOW (SCS)



Transportation and
Customs Control (SCS)



ISC



GPS

TD/VCD



t2



$t_2 - t_1 =$
duration of
the vehicle's
stay at the
checkpoint.

End of
border
crossing
point



Start of
the border
crossing
point



t1



RPM



WDC



Acceleration of passage





Implementation of an Electronic Queuing System



Registration in the
online queue



Virtual queue



Entering the
waiting area



Entry to the
border
crossing point

Regulatory framework

Amendments to the border crossing procedure to include pre-registration as a mandatory step

Infrastructure

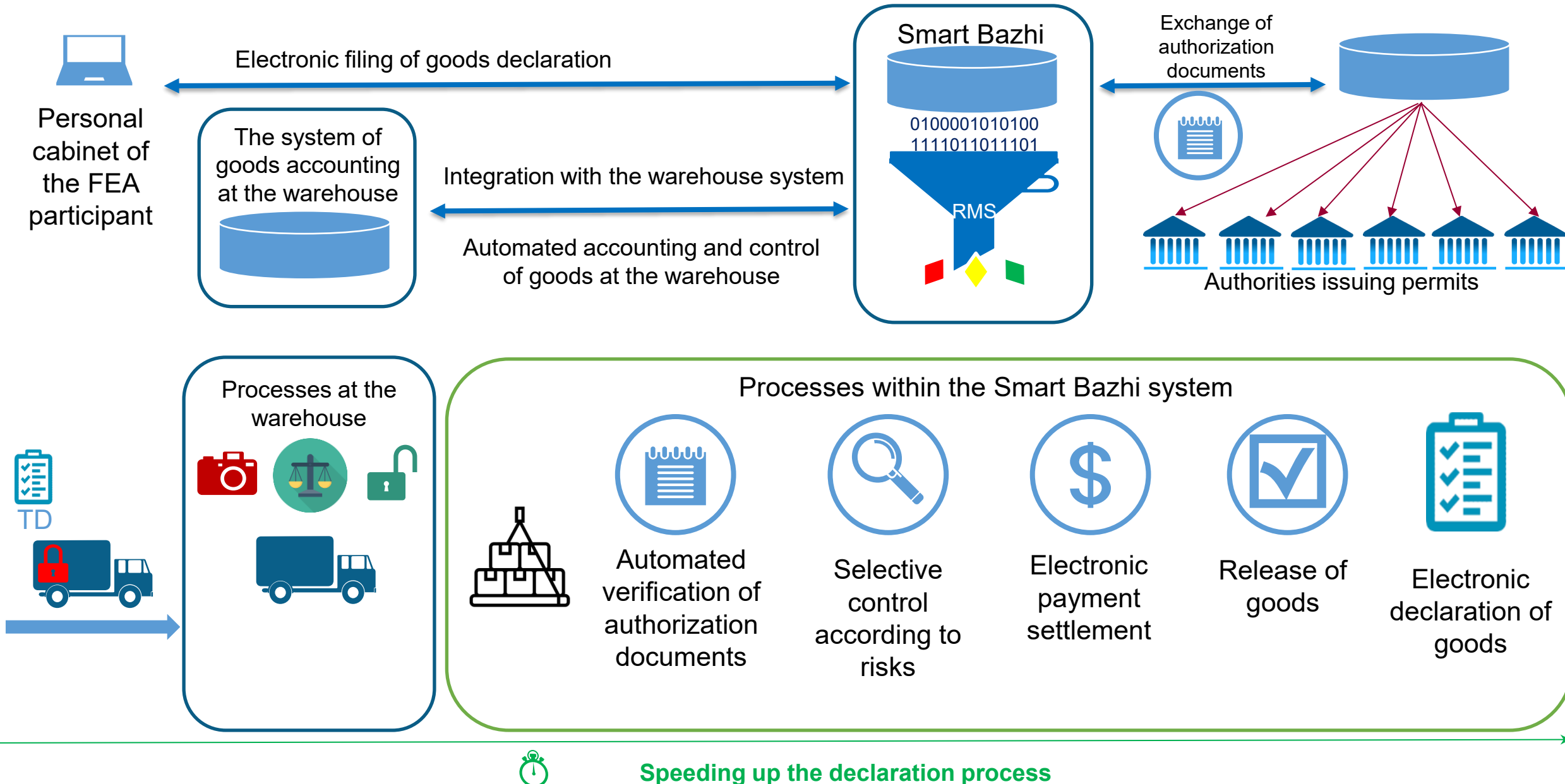
Creation of the necessary physical infrastructure to ensure the operation of the electronic platform, including waiting areas

Information system

Implementation of an electronic platform for pre-registration of trucks, goods, and drivers



Place of Customs Clearance





Customs Administration of the Kyrgyz Republic

Thank you for your attention!

2025-11-18
Bishkek

