



From Glaciers to Farms (G2F) – Promoting a Regional Program in Central and West Asia (Central Asia, South Caucasus and Pakistan)



From Glaciers to Farms (G2F) – Promoting a Regional Program in Central and West Asia



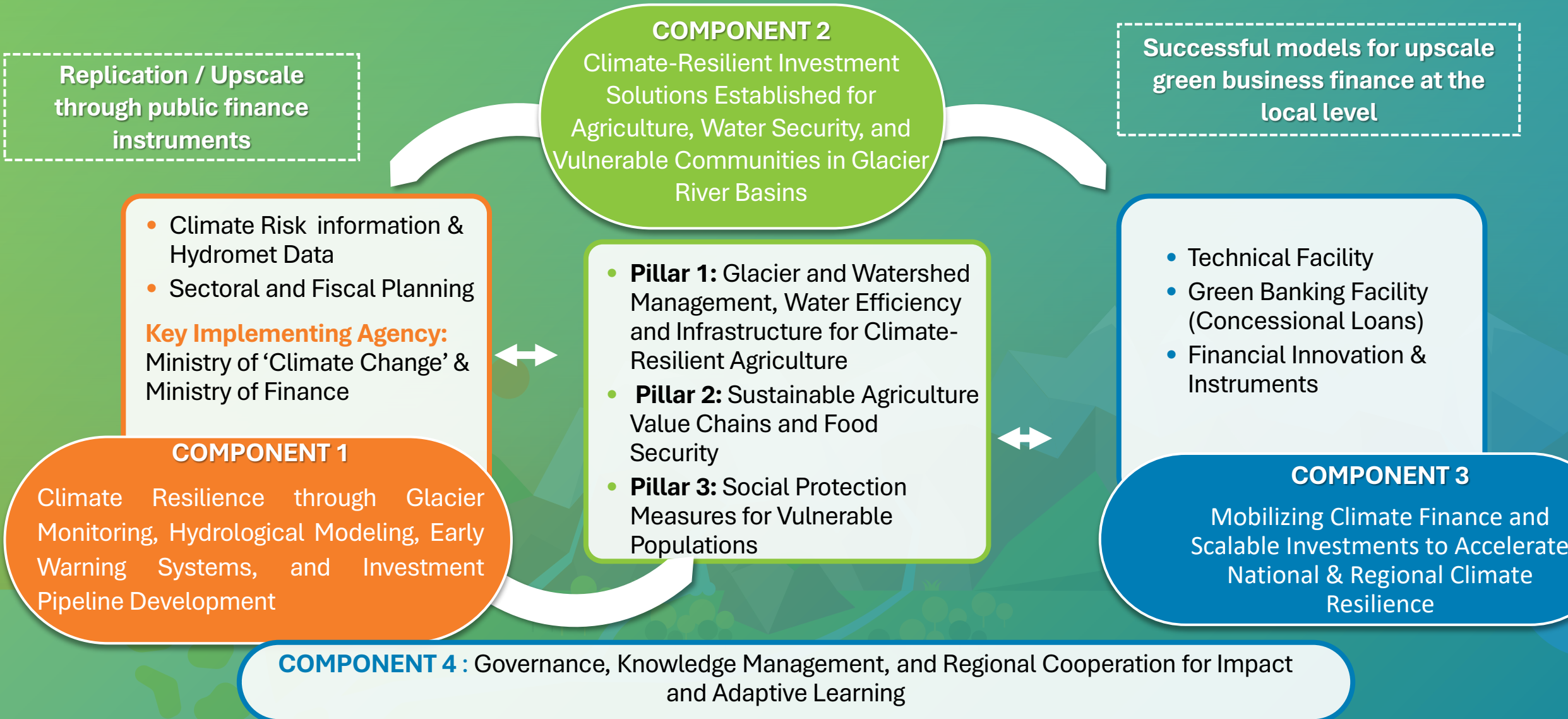
Objective: To enhance the resilience of communities, food systems and social infrastructure in Central and West Asia countries

Impact: Increased Climate-Resilience and Adaptive Capacity of Communities, Food Systems and Social Infrastructure in Central and West Asia

Total Financing: \$3.5Billion from ADB's own resources and co-financing, including GCF

Implementation Period: 2026-2032 (7 years)

From Glaciers to Farms (G2F) – Components



Project Preparatory Facility: Glacier Risk Assessment

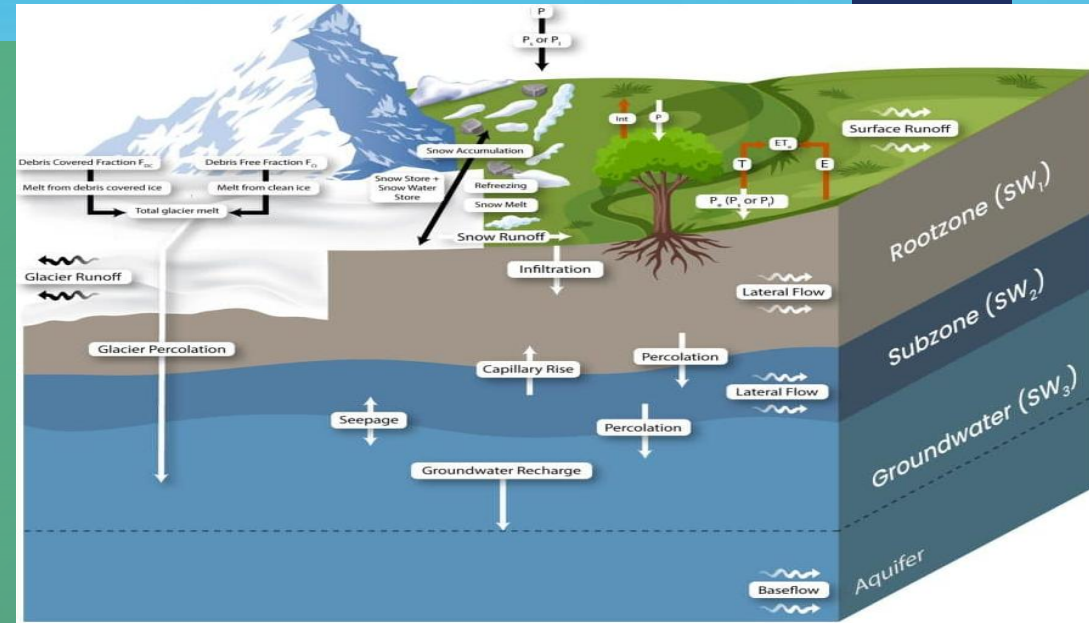


Objective: Assess the impacts of glacial melting in water availability and supply of 4 important watersheds in Central and West Asia

Selection criteria of watersheds:

- Role of glaciers in the river basins
- Relative importance of agriculture in the total water demand
- Transboundary aspects (2+x countries)
- Coverage over the project area

Methodology:



Result of the Study:

Informs the preparation of the G2F proposal : Identification of investment projects (including EWS and hydromet needs) for the 9 DMCs

Glacier Risk Assessment



Output 1: Inception Report

Output 2: High-level Baseline and Climate Risk Assessment (regional)

- Review of climate trends and projections and its impacts to glacial melting

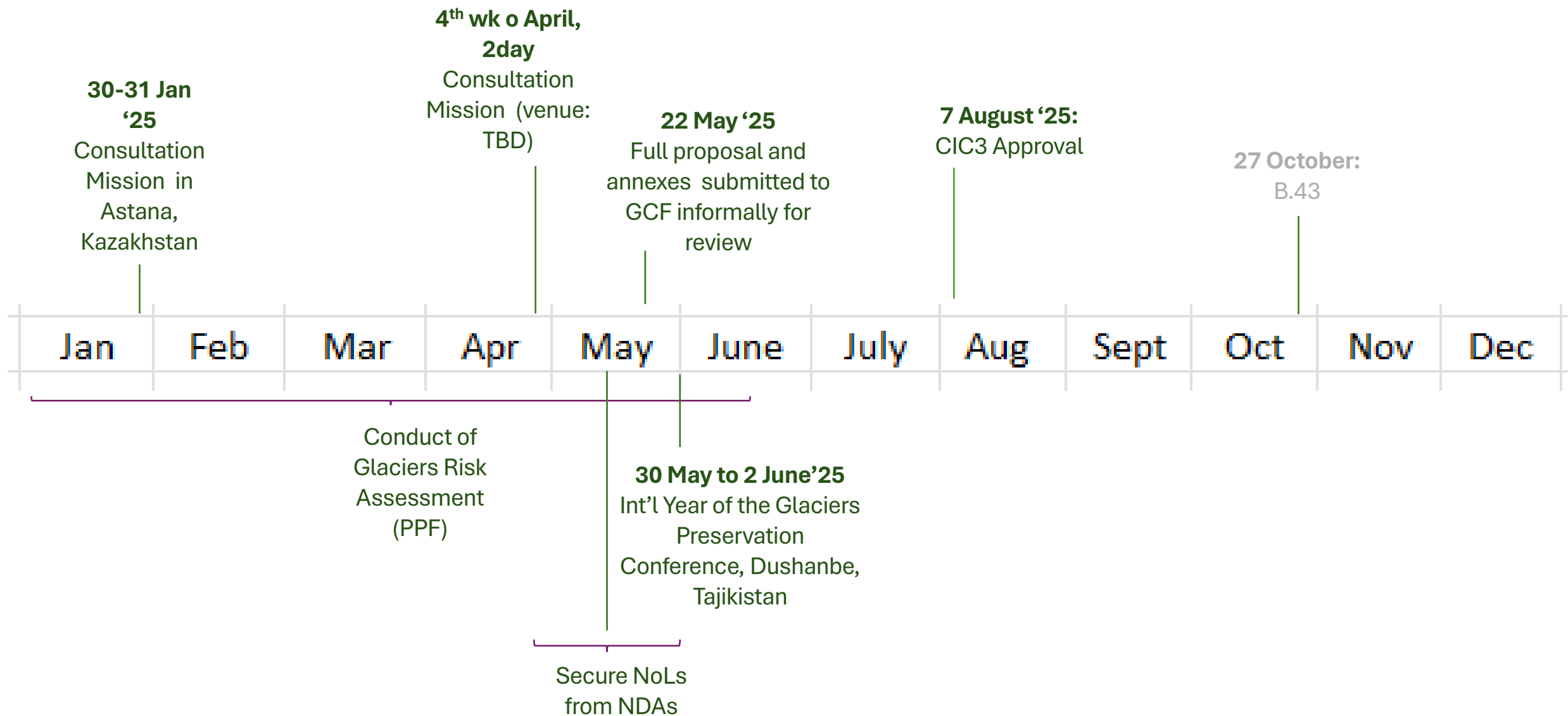
Output 3: Detailed Baseline Risk Assessment (i.e., Naryn, Pyanj, Kura and Swat)


- Uses climate modelling to analyze climate risks and trends at the watershed level

Output 4: Institutional Capacity Assessment

- Includes capacity assessment and research recommendations on tackling glacial melting, early warning system, and hydromet facilities and equipment

G2F Updates and Timelines





For more information please contact:
Chris Dickinson – Cdickinson@adb.org
Kat Coballes – Kcoballes@adb.org