



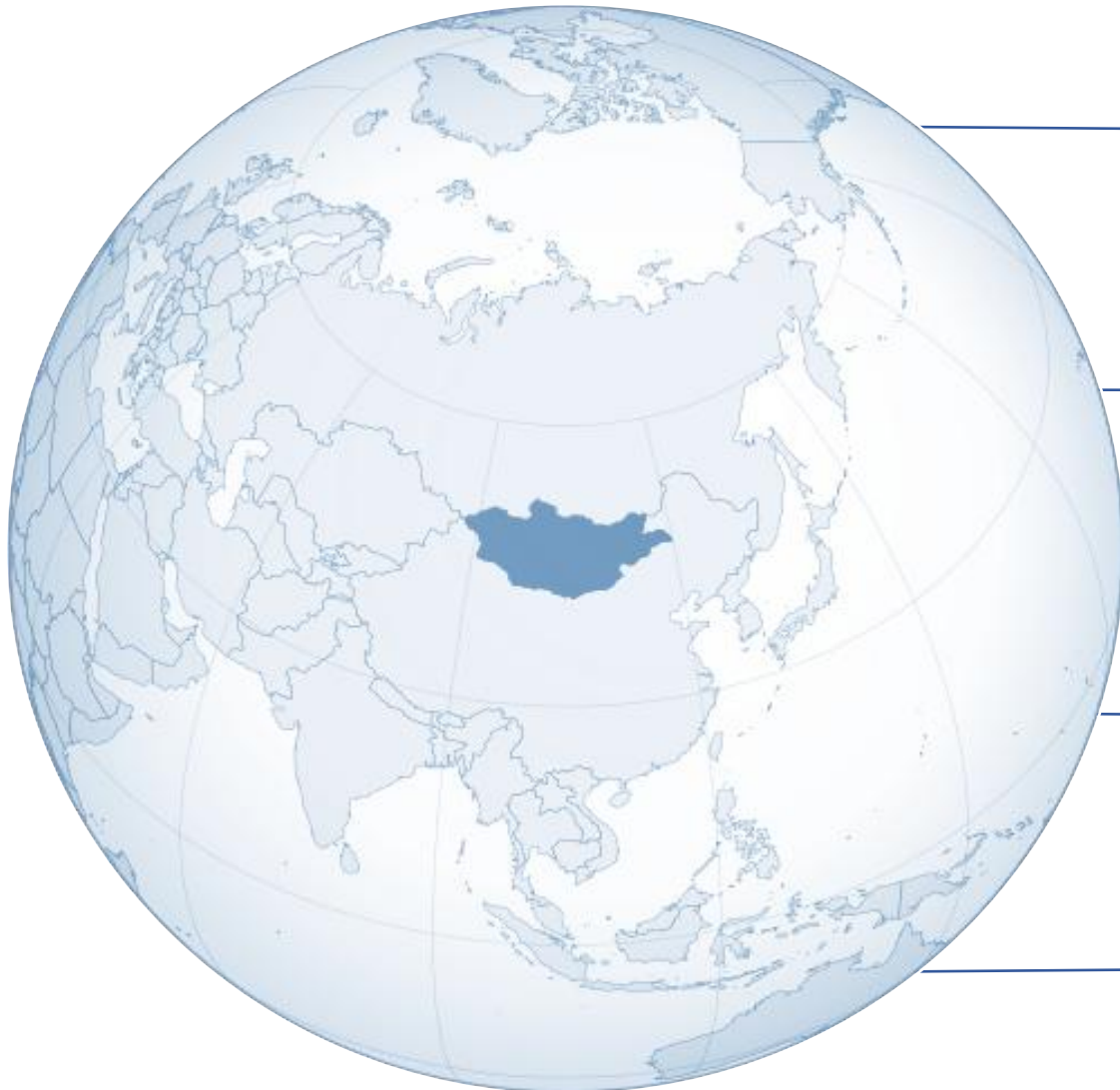
ЗАСГИЙН ГАЗРЫН  
ХЭРЭГЖҮҮЛЭГЧ АГЕНТЛАГ  
ГААЛИЙН ЕРӨНХИЙ ГАЗАР

# USE OF NEW TECHNOLOGIES IN RISK MANAGEMENT SYSTEM

ULAANBAATAR  
2026



## CONTENTS



### BACKGROUND



### CUSTOMS RISK MANAGEMENT



### THE FUTURE OF RISK MANAGEMENT



### CHALLENGES AND SOLUTIONS



## MONGOLIA'S FOREIGN TRADE TURNOVER IN 2025

**TRANSPORT**  
2,516,315

**MANIFEST**  
197,640

**CONTAINER**  
420,871

**DECLARATION**  
1.147,613

**AIRCRAFT**  
10,062

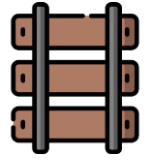


Total **39** borders: **16** ports bordering Russia; **17** ports bordering with China;

• ROAD BORDER



• RAILWAY BORDER



• AIR: 6 Borders



2025

FOREIGN TRADE VALUE  
(STATISTICAL VALUE)

**27,155**  
(Million USD)

FOREIGN TRADE CARGO  
VOLUME

**112,2**  
(Million tons)



## CUSTOMS RISK MANAGEMENT

### RISK MANAGEMENT SYSTEM



#### KEY CHALLENGE:

INTERNATIONAL TRADE AND CROSS-BORDER MOVEMENTS CONTINUE TO GROW EVERY YEAR



SINCE **2011**, IMPLEMENTED A RISK MANAGEMENT SYSTEM



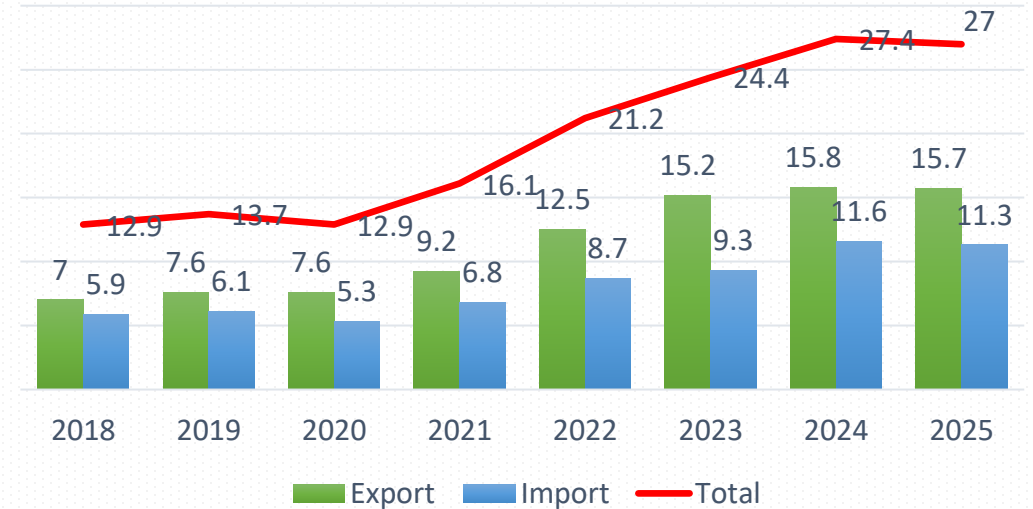
#### RISK SELECTIVITY FRAMEWORK:

- ✓ Random Selection
- ✓ First-Time Import/Export Declarations
- ✓ Mandatory Risk Criteria
- ✓ Certified Criteria
- ✓ Exclusion Criteria
- ✓ High-Risk Criteria

#### RISK CHANNELS:

- Green Channel → without Documentary and Physical Inspection
- Orange Channel → Documentary audit
- Red Channel → Documentary and Physical Inspection

#### TRADE VOLUME



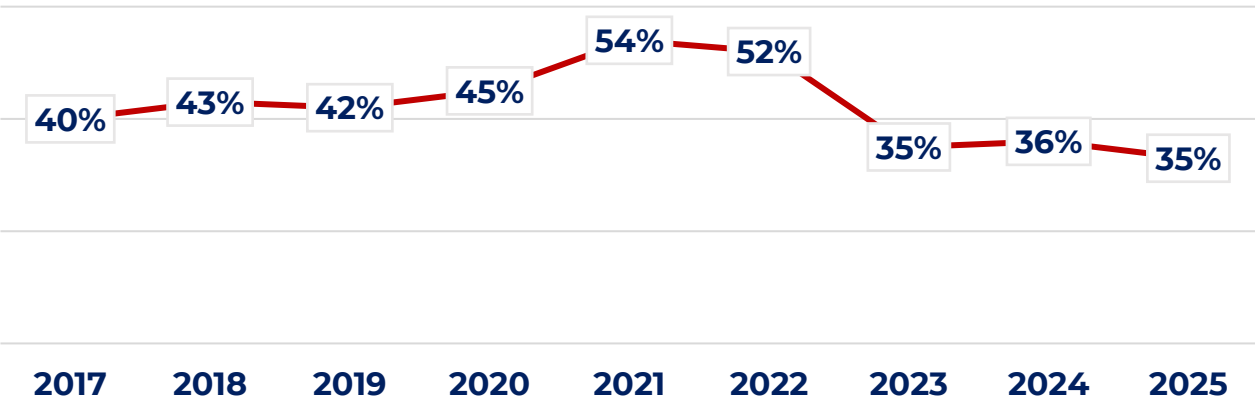


## CHANGING RISK ENVIRONMENT

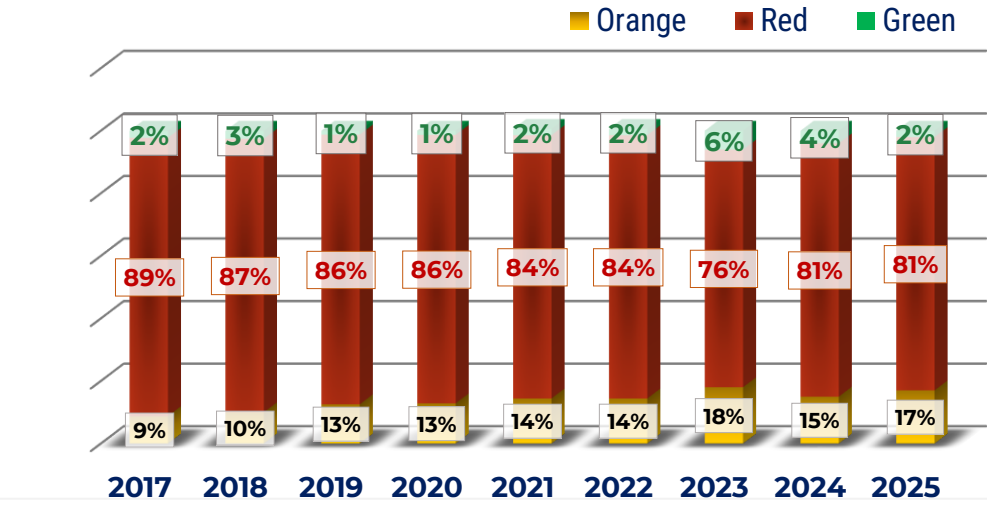
### SMARTER RISK MANAGEMENT THROUGH BETTER TARGETING:

- ✓ Physical inspection rate decreased from 54% (2021) to 35% (2025) as risk targeting became more precise.
- ✓ Green channel share for imports increased from 9% to 17%, enabling faster clearance for compliant traders.
- ✓ Green channel share for exports expanded from 47% to 67%, reflecting lower-risk export profiles and greater confidence in trader compliance.
- ✓ These trends demonstrate the transition from more inspections to smarter inspections.

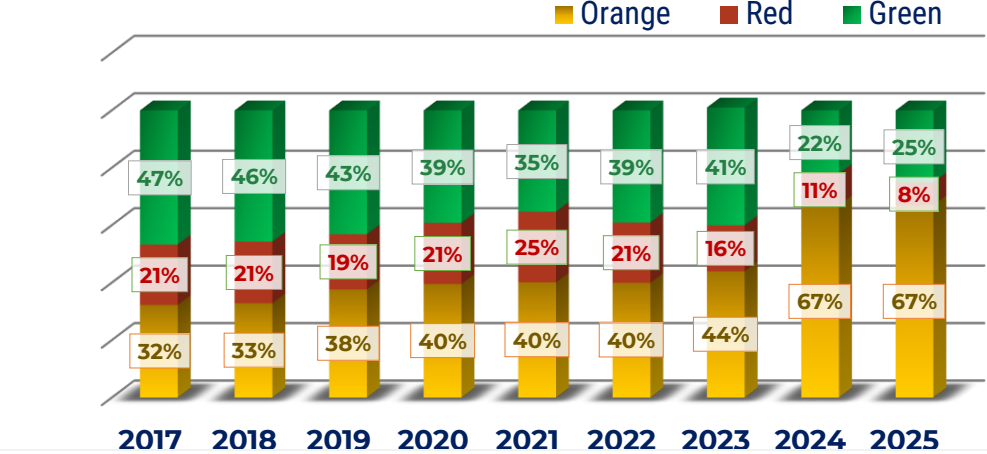
### PHYSICAL INSPECTION RATE



### IMPORT (2017-2025)



### EXPORT (2017-2025)





## SMART GATE RISK MANAGEMENT

### EXTENDING RISK MANAGEMENT BEYOND CUSTOMS DECLARATIONS



#### SMART GATE



- Vehicle license plate recognition
- RFID reader
- Data Exchange to CAIS
- Automatic entry/exit registration



Faster border processing → Reduced manual intervention → More effective allocation of inspection resources

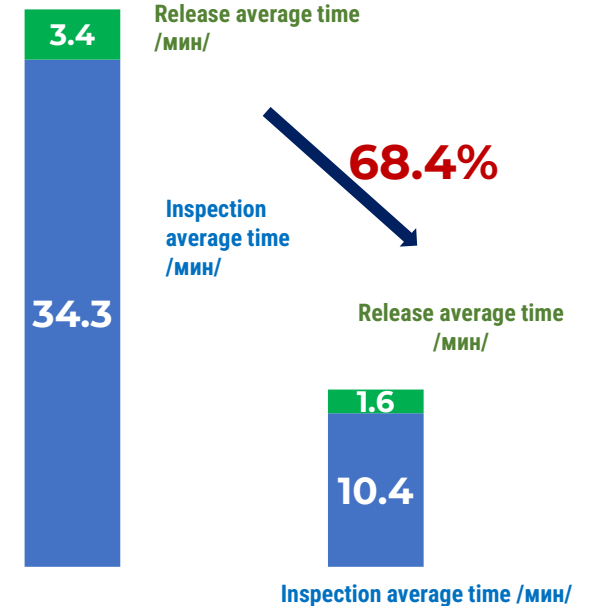
Mongolia Customs has integrated risk assessment into the Smart Gate System at border crossings.

Vehicles are automatically assigned to:

- Green Lane – Low Risk
- Red Lane – High Risk



#### TIME SPENT INSPECTING VEHICLES ENTERING THE BORDER





# AUTHORIZED ECONOMIC OPERATOR

## OBJECTIVES OF AEO PROGRAM:

- Strengthening Customs–Business Cooperation
- Reducing Trade Costs and Processing Time
- Enhancing Supply Chain Security

## MUTUAL RECOGNITION AGREEMENT (MRA) FOR AEO :

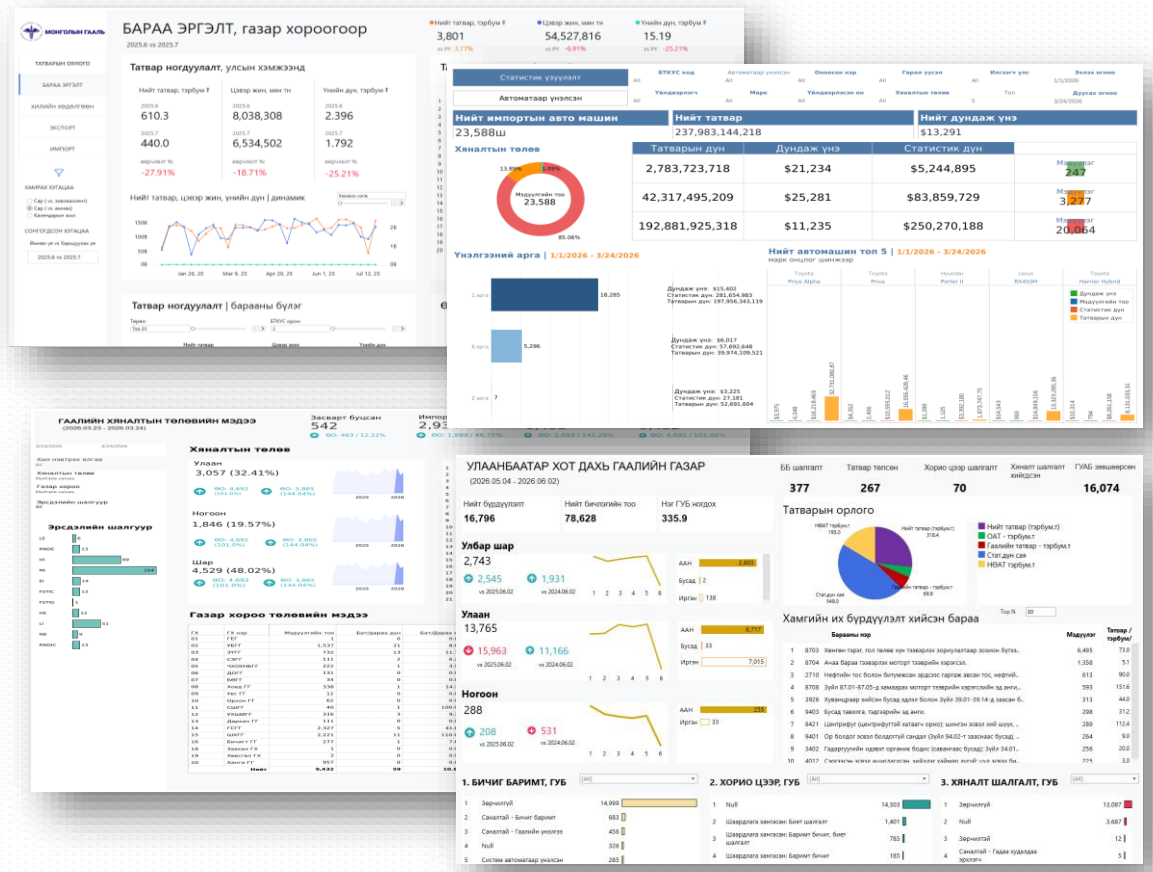
COUNTRY	IMPLEMENTATION
China (2019)	Implementation started on 01 June 2025.
Republic of Korea (2019)	Preparations are underway for implementation from 01 September 2026.
Russia (2026)	The agreement was signed on 25 May 2026.

AS OF 2026, 7 COMPANIES HAVE BEEN CERTIFIED AS AEOs.





# BIG DATA ANALYTICS & REAL-TIME DASHBOARDS



As trade volumes and digital transactions continue to grow, Mongolia Customs is leveraging real-time dashboards and data analytics to support evidence-based decision-making.

## KEY DASHBOARDS

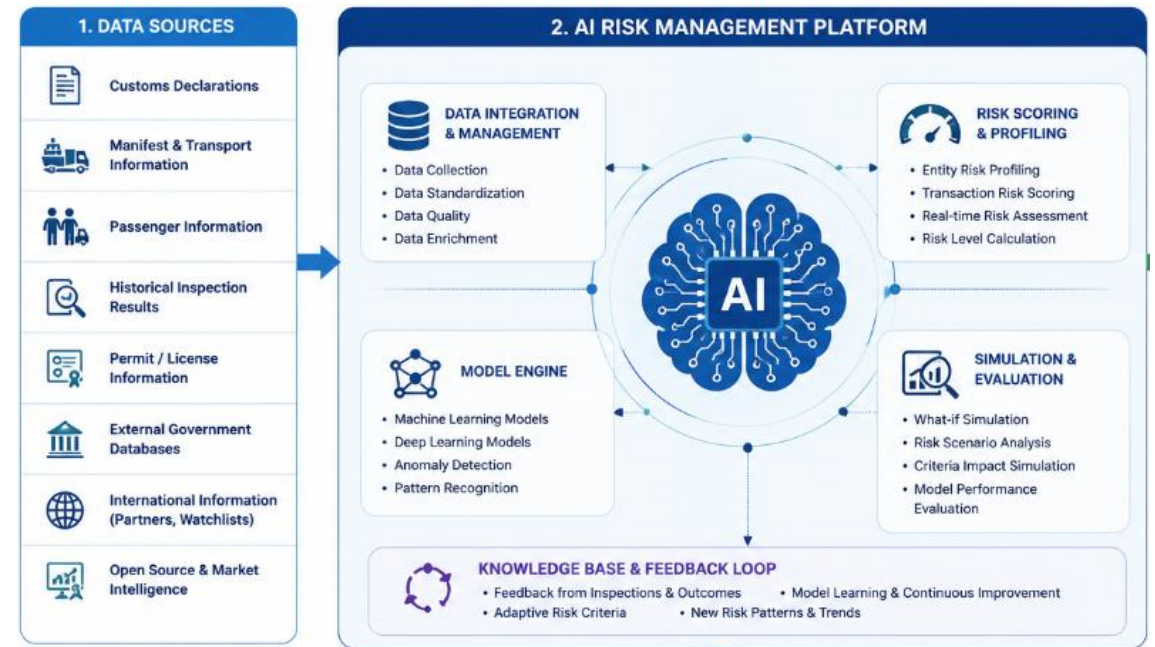
- ❖ CUSTOMS 360
- ❖ Risk Management Monitoring
- ❖ Clearance Time Measurement
- ❖ Trade and Revenue Analytics
- ❖ Border Movement Monitoring

## AI-Based Risk Management Project (2025–2028)

The Project for the Advancement of Risk Management and Baggage Control of Mongolian Customs General Administration

### VISION FOR 2028

- ❑ AI-POWERED RISK MANAGEMENT SYSTEM
- ❑ HYBRID RISK ASSESSMENT(CRITERIA-BASED + AI-BASED)
- ❑ AUTOMATED RISK PROFILING
- ❑ RISK SCENARIO SIMULATION
- ❑ RISK CRITERIA PERFORMANCE EVALUATION
- ❑ PREDICTIVE RISK ANALYTICS





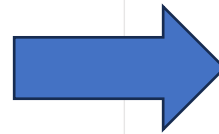
## CHALLENGES AND SOLUTIONS

### Mongolia Customs: Key Challenges and Solutions

Mongolia Customs faces the challenge of managing rapidly growing trade volumes across a vast territory and multiple border crossings, while maintaining security with limited human resources.

#### Key Challenges

- ❖ Increasing trade volume and border movements
- ❖ Limited inspection resources
- ❖ Growing data volume
- ❖ Demand for faster border clearance
- ❖ Emerging and evolving risks



#### OUR RESPONSE

- ❖ Risk Management System
- ❖ Digital Customs
- ❖ Smart Gate Technology
- ❖ Big Data Analytics
- ❖ AI-Based Risk Management



ЗАСГИЙН ГАЗРЫН  
ХЭРЭГЖҮҮЛЭГЧ АГЕНТЛАГ  
ГААЛИЙН ЕРӨНХИЙ ГАЗАР

THANK YOU FOR YOUR PRECIOUS TIME!

GENDENTSEVEEN Tseveldulam,  
The Director of the Trade Facilitation Department,  
The Customs General Administration of Mongolia  
E-mail: [gendentseven.ts@customs.gov.mn](mailto:gendentseven.ts@customs.gov.mn)  
Tel: 70130060