

# Data Construction and Issues

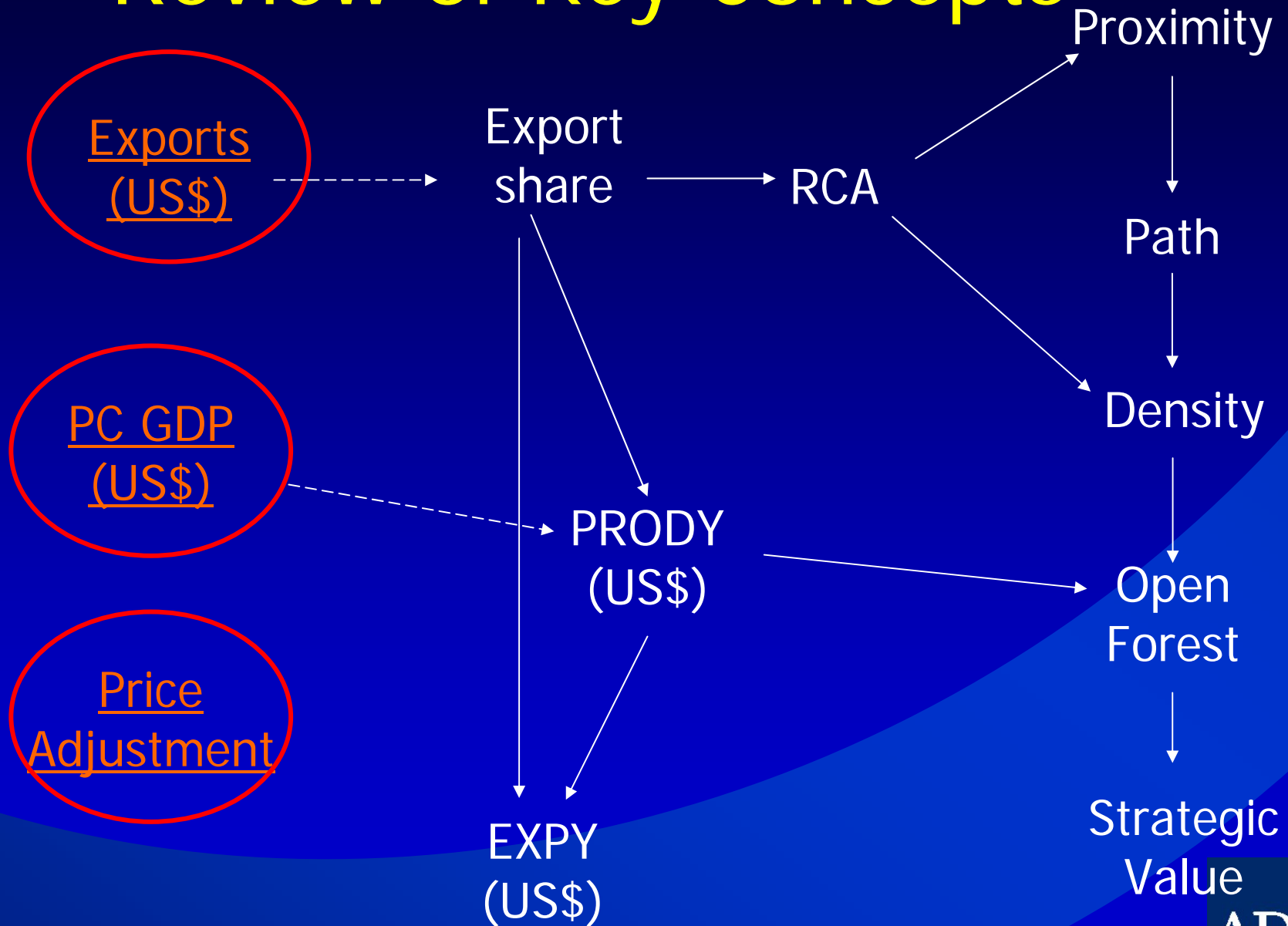
**Norio Usui, Damaris Yarcia, Arnelyn Abdon**

Strategic Research Unit  
Central and West Asia Department  
Asian Development Bank

# Objectives of the session

- Data requirements
- Data issues

# Review of Key Concepts



# What are the data needed to construct the ST indices?

- Trade values
- Per capita income
- Prices of key commodities

# DATA CONSTRUCTION

1. Data: Bilateral trade by commodity (1976-2006)
2. Datasource: Comtrade SITC2 Ag4
3. Exports of CAREC+4 member countries were estimated based on the following data:
  - a. IMPORTS – AFG, GEO, TJK, TKM, UZB
  - b. EXPORTS & IMPORTS – ARM, AZE, CHN, KAZ, MNG, PAK
  - c. EXPORTS - KGZ
4. For those falling under (3.b), exports is estimated as equal to imports declared by the trading partner if import data is  $>0$ , otherwise it is equal to exports declared by the reporting country
5. The final set of data replaces the exports data of the CAREC+4 countries in the World Exports database

# Other Issues

- Mirror Statistics have their own limitations partly due to:
  - Valuation of imports at CIF and valuation of exports at FOB
    - Implications on the analysis of transport costs
  - Re-exports
    - Implications on the analysis of trade volume

To partly address this issue, the final set of data is selected based on comparability of totals to the reconciled Feenstra bilateral trade data figures and other consistency checks, such as in the case of Kyrgyz Republic.

# Some Issues on Trade Statistics that need to be addressed

- Capturing ST in Xinjiang Uygur Region
- There is a need to improve customs declaration of trade values in each of the CAREC member countries

Thank you



# DATA SOURCES, ISSUES

Data	Source	Level of reporting	Issue	Possible Solution
EXPORT VALUE (nominal US\$)	<a href="#">UN COMTRADE</a> SITC REV2 AGG4	By trading partners By Commodity By Year	No data for AFG, TJK, TKM and UZB	Estimate exports using <a href="#">mirror statistics</a>

# DATA SOURCES, ISSUES

Data	Source	Level of reporting	Issue	Possible Solution
EXPORT VALUE (nominal US\$)	<a href="#">UN COMTRADE</a> SITC REV2 AGG4	By trading partners By Commodity By Year	No data for AFG, TJK, TKM and UZB	Estimate exports using <a href="#">mirror statistics</a>
Per capita GDP 2005 PPP I\$	<a href="#">WB WDI</a>	By country Year	No data for AFG	Use alternative data sources <a href="#">PWT</a> , ADB SDBS

# DATA SOURCES, ISSUES

Data	Source	Level of reporting	Issue	Possible Solution
EXPORT VALUE (nominal US\$)	<a href="#">UN COMTRADE</a> SITC REV2 AGG4	By trading partners By Commodity By Year	No data for AFG, TJK, TKM and UZB	Estimate exports using <a href="#">mirror statistics</a>
Per capita GDP 2005 PPP I\$	<a href="#">WB WDI</a>	By country Year	No data for AFG	Use alternative data sources <a href="#">PWT</a> , ADB SDBS
Price	IMF Commodity Price Index; IMF-IFS	By commodity	Sharp <a href="#">fluctuations in the prices</a> of key commodities	<a href="#">Adjust value of exports</a> during periods with sharp price fluctuations

# Mirror Statistics

Country's export = sum of imports declared by partner countries

## IMPORTS (US\$)

period	exporter	commoditycode	importer	import
1976	Afghanistan	S2-0575	Finland	10
1976	Afghanistan	S2-0575	Ireland	10
1976	Afghanistan	S2-0575	Norway	10
1976	Afghanistan	S2-0575	Sweden	10
1976	Afghanistan	S2-0741	Saudi Arabia	5
1976	Afghanistan	S2-0741	Saudi Arabia	6
1976	Afghanistan	S2-2120	Denmark	2
1976	Afghanistan	S2-2120	Finland	2
1976	Afghanistan	S2-2120	Norway	2
1976	Afghanistan	S2-2120	Sweden	6
1992	Turkmenistan	S2-0579	Germany	3
1992	Turkmenistan	S2-0579	Lithuania	4
1992	Turkmenistan	S2-2631	Belgium-Luxembourg	1
1992	Turkmenistan	S2-2631	Bulgaria	1
1992	Turkmenistan	S2-2631	France	1
1992	Turkmenistan	S2-2631	Germany	1
1992	Turkmenistan	S2-2631	Italy	1

## ESTIMATED EXPORTS (US\$)

period	exporter	commoditycode	export
1976	Afghanistan	S2-0575	40
1976	Afghanistan	S2-0741	11
1976	Afghanistan	S2-2120	12
1992	Turkmenistan	S2-0579	7
1992	Turkmenistan	S2-2631	5

Sorted by:  
year  
exporter  
commodity

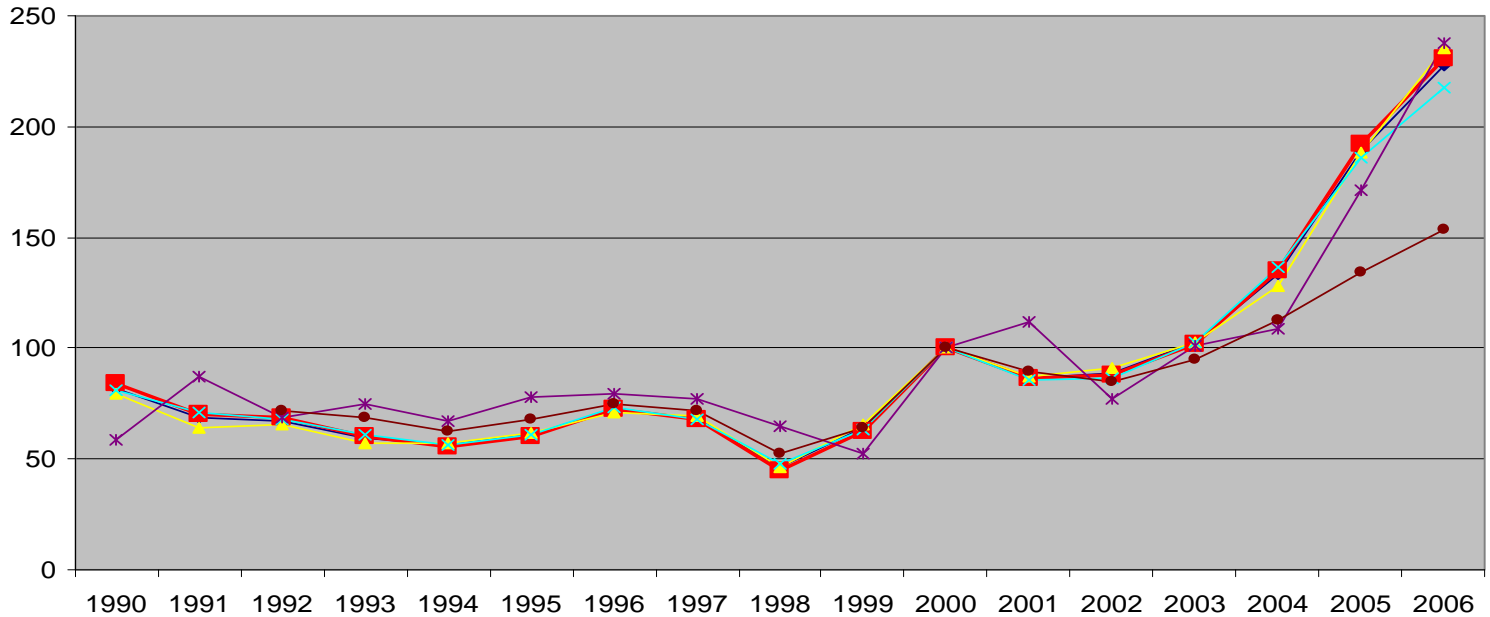
# PRICE INDEXES

Source of raw data: IMF Commodity Price Index; IMF-IFS

- Data on crude oil was rebased to 2000 (original data are 2005-based)
- Data on prices were used to derive price indexes for cotton, copper, aluminum
- Below are the prices/indexes used for each commodity (the ones that are closest to the commodity being adjusted were selected):

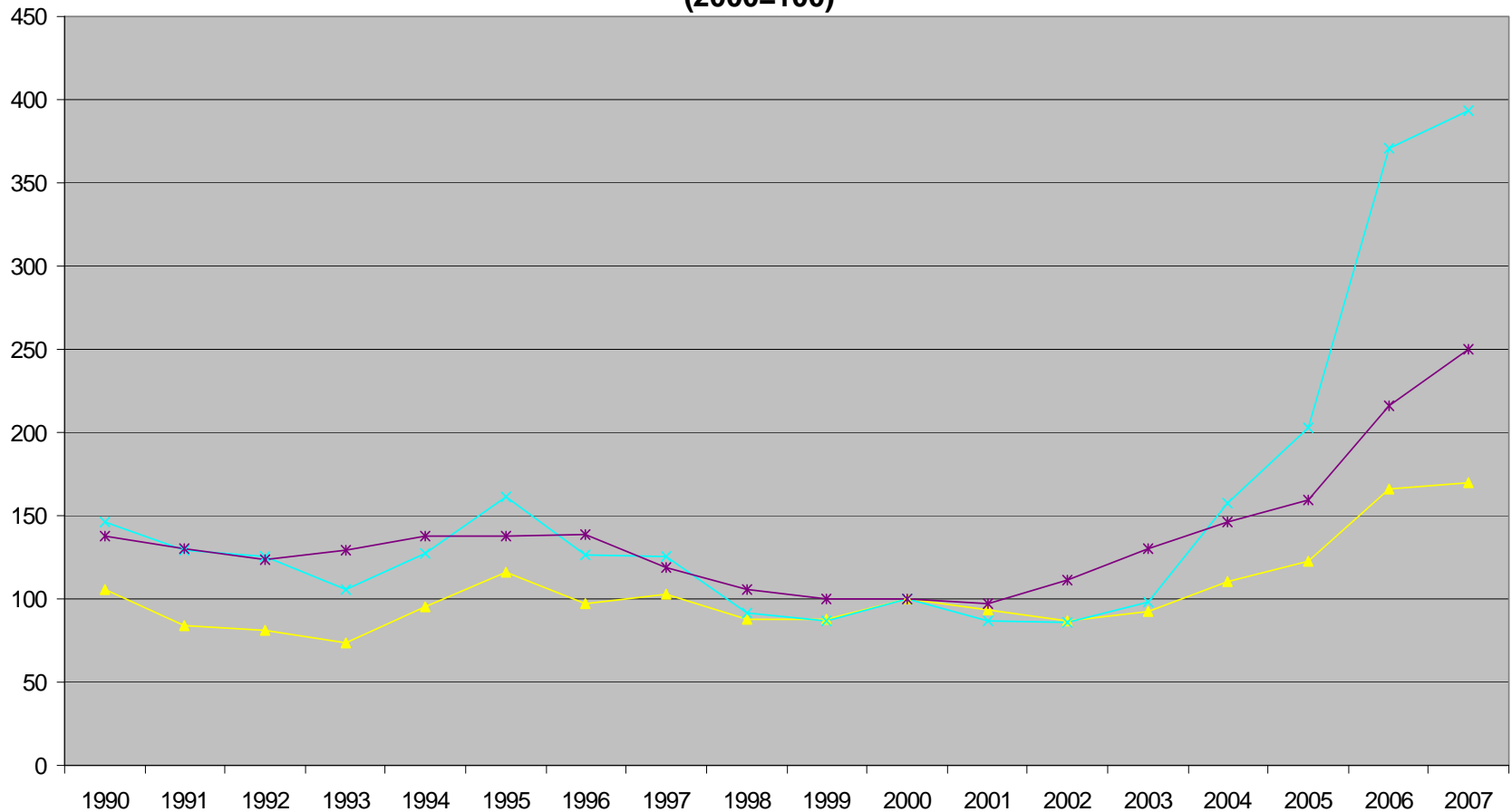
Commodity description	Commodity code	CAREC Countries affected	Descriptor of price index used
Crude oil	3330	AZE, GEO, KAZ, MNG, TKM	Crude oil (petroleum), price index, simple average of 3 spot prices (Dated Brent, West Texas Intermediate, and the Dubai Fateh)
Petroleum gas	3414	KAZ, TKM, UZB	Crude oil (petroleum), price index, simple average of 3 spot prices (Dated Brent, West Texas Intermediate, and the Dubai Fateh)
Copper ore	2871	ARM, GEO, MNG	Copper, grade A cathode, LME spot price, CIF European ports, US\$ per metric tonne
Copper & copper Alloys	6821	ARM, KAZ, UZB	Copper, grade A cathode, LME spot price, CIF European ports, US\$ per metric tonne
Aluminium	6841	AZE, GEO, TAJ	Aluminum, 99.5% minimum purity, LME spot price, CIF UK ports, US\$ per metric tonne
Gold, non-monetary	9710	ARM, GEO, KGZ, MNG, UZB	Gold London Av 2 <sup>nd</sup> Fix

### PRICE INDEXES (2000=100) Crude Oil & Natural Gas



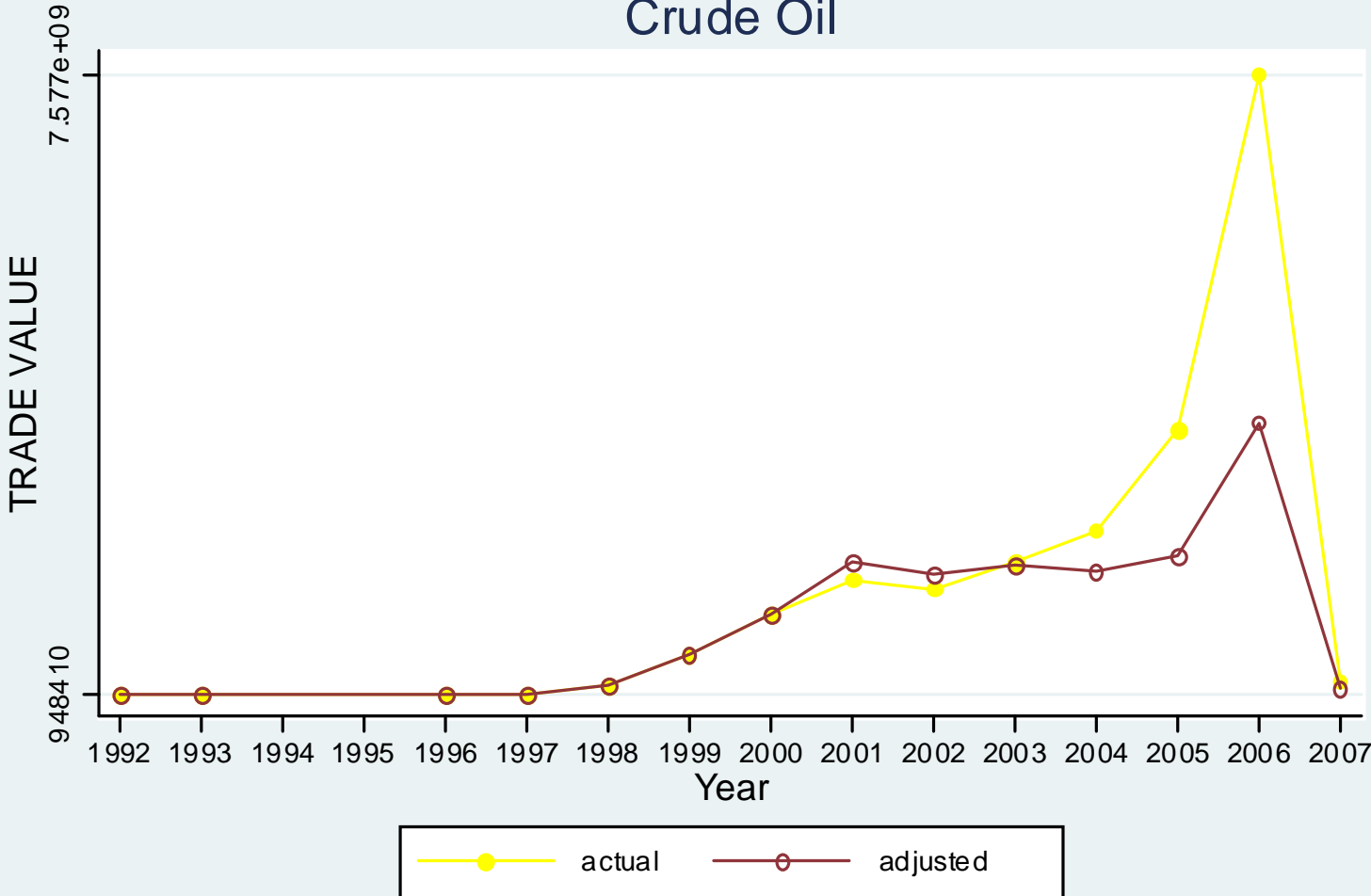
- ◆ Crude Oil (petroleum), simple average of three spot prices; Dated Brent, West Texas Intermediate, and the Dubai Fateh, US\$ per barrel
- Crude Oil (petroleum); Dated Brent, US\$ per barrel
- ▲ Crude Oil (petroleum); Dubai Fateh, US\$ per barrel
- ✕ Crude Oil (petroleum); West Texas Intermediate, US\$ per barrel
- \* Natural Gas, Russian Natural Gas border price in Germany, US\$ per thousands of cubic meters of gas
- Natural Gas, Indonesian Liquefied Natural Gas in Japan, US\$ per cubic meters of liquid

### COMMODITY PRICE INDEX (2000=100)



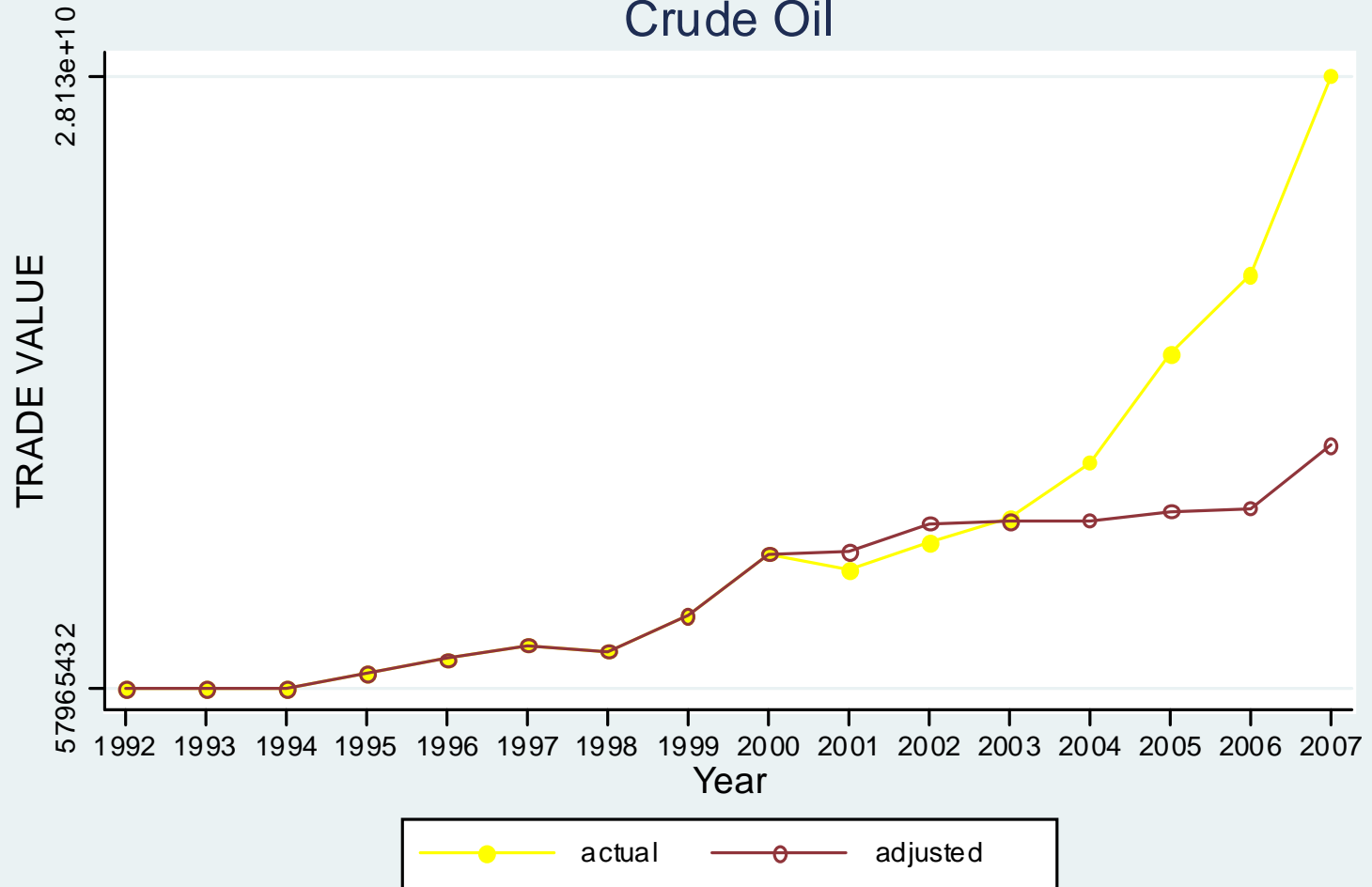
- ▲ Aluminum, 99.5% minimum purity, LME spot price, CIF UK ports, US\$ per metric tonne
- × Copper, grade A cathode, LME spot price, CIF European ports, US\$ per metric tonne
- \* Gold London AV 2ND FIX

# AZERBAIJAN Crude Oil



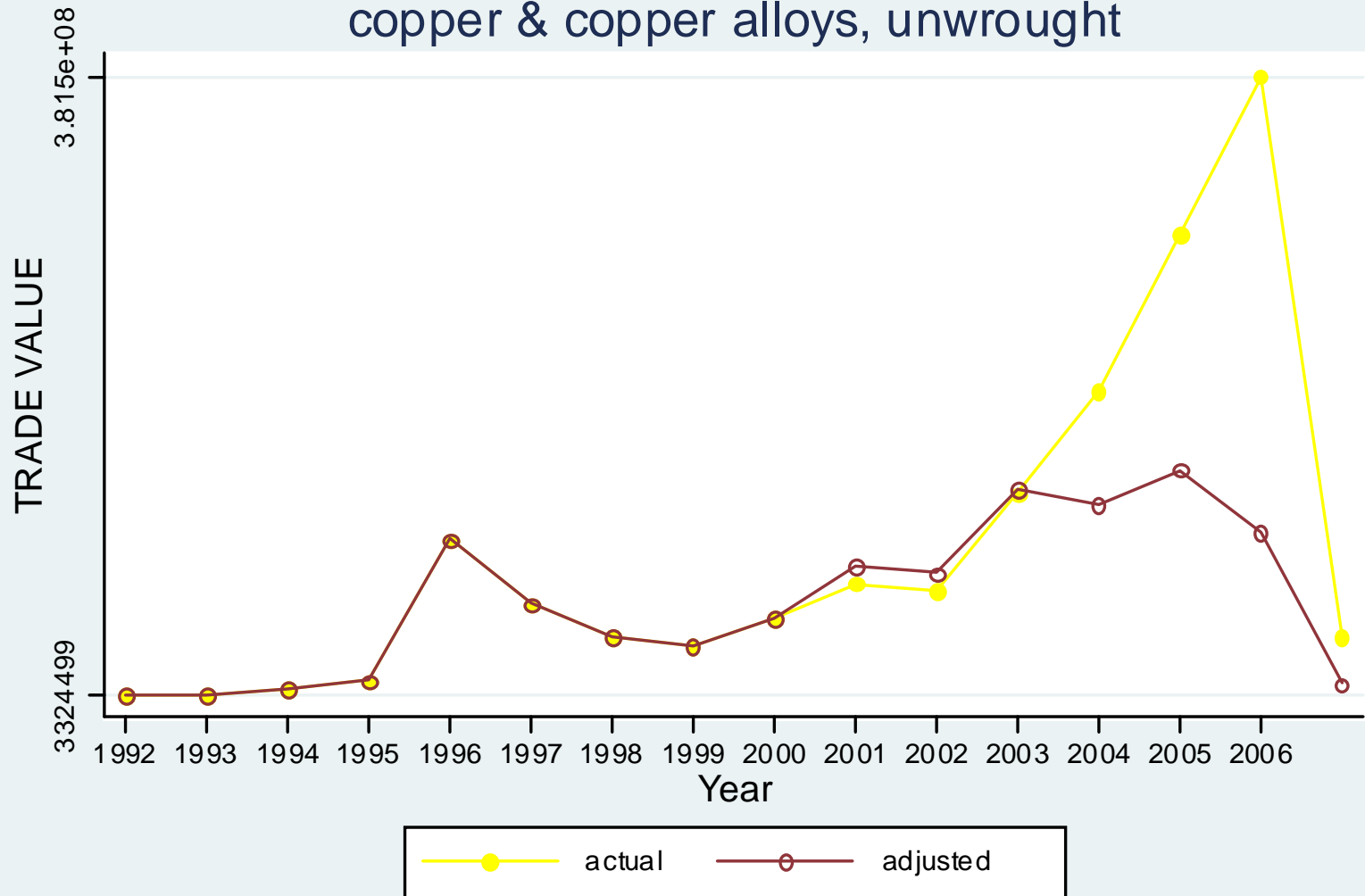


# KAZAKHSTAN Crude Oil



# UZBEKISTAN

## copper & copper alloys, unwrought



# MONGOLIA Gold, Non-Monetary



# http://comtrade.un.org/

UN Comtrade - Microsoft Internet Explorer provided by Asian Development Bank

File Edit View Favorites Tools Help

Address <http://comtrade.un.org/>

Google Search Bookmarks Check Translate AutoFill Sign In

## UN comtrade

United Nations Commodity Trade Statistics Database  
Statistics Division

International Merchandise Trade Statistics (IMTS) - United Nations Statistics Division  
This web site provides access to information and data on International Merchandise Trade Statistics (IMTS) and the work of the International Merchandise Trade Statistics Section (IMTSS) of the United Nations Statistics Division (UNSD). The work program of the IMTSS has four parts:

-  **methodology IMTS**  
IMTSS is responsible for the development and maintenance of the methodological guidelines on IMTS, including the Standard International Trade Classification (SITC).
  1. Concepts and methods  
[UN Expert Group on IMTS \(EG-IMTS\)](#)
  2. National Practices
  3. Inventory of IMTS classifications and related correspondence tables
-  **database**  
Free data access. Registered user have full access to all features.  
The UN Comtrade database contains more than 1 Billion trade records starting from 1962.  
As part of the UN Comtrade database the following additional services are offered:  
[knowledge base](#)  
[web services](#)  
[community forum](#)  
[Comtrade @ UN Data](#) (UN Comtrade data on UN data)
-  **analytical tables (publications)**  
Free access to the latest tables.  
The analytical tables cover trade values and indices for individual countries and regions.
  1. [Tables published in the International Trade Statistics Yearbook](#)
  2. [Monthly Bulletin of Statistics tables](#)
  3. [Annual Totals Table \(Country totals compared\)](#)
  4. [Historical data \(1900-1960\)](#)

<http://comtrade.un.org/db>

start almaty 2009 21 Oct CI Research ... UN Comtrade - Micros... 11:56 AM

### Step 0. Load Saved Query (optional)

-- Select Saved Query to Load --

### Step 1. Select Classification

HS:  As reported  92  96  02  07  BEC

SITC:  As reported  Rev.1  
 Rev.2  Rev.3  Rev.4

### Step 2. Enter Commodities, Reporters, Partners, Years and Select Trade Flow

**Basic Items** | **Advanced Items**

#### Enter Commodity Codes / Text

Special Codes : All, AG0,AG1, .. AG6 (aggregate level) and LF (leaf).  
 Use - to exclude. Wild characters : \* (Any string of zero or more characters) and ? (Any single character)

Level of aggregation

#### Enter Reporters Codes / Text

Separated by comma. Special code: All. Minus sign is not applicable.

Exporting country

#### Enter Partners Codes / Text

Separated by comma. Special code: All. Minus sign is not applicable.

Importing country

#### Enter Years

Separated by comma. Special code: All. Minus sign is not applicable.

Years

#### Select Trade Flow

Exports figures always include Re-exports; Re-exports should be used only to distinguish between Domestic exports and Re-exports.

Import  Export  re-Export  re-Import

#### Work on IMTS

- > [Methodology IMTS](#)
- > [Analytical Tables\\*](#)
- > [Int.Coop. & Workshops](#)
- > [Newsletter\\*](#)

\* regularly updated

#### Search for data help



#### Suggested articles (beginner)

- > [Express Selection - Help](#)
- > [Data query and extraction manual](#)
- > [Which classification system is appropriate to use?](#)

#### Suggested articles (advanced)

- > [Saved Query Notification](#)
- > [Distinction between Exports and Re-exports](#)
- > [Reported and Converted Data / Conversion Issues](#)

#### Released data

	# of country periods
today (2009.10.08)	0
<a href="#">in a week</a>	10
<a href="#">in a month</a>	36
<a href="#">year-to-date</a>	355
<a href="#">in a year</a>	463
<a href="#">all data</a>	5939



**The World Bank Group**  
**WDI Online**  
World Development Indicators  
Select English

Select Variables Show Report Info Help?  
Country | Series | Time

**Classification**

- Aggregates
- East Asia & Pacific
- Europe & Central Asia
- Latin America & Caribbean
- Middle East & North Africa
- North America
- South Asia
- Sub-Saharan Africa

Search  Search Reset Notes

Available - 227

- Afghanistan
- Albania
- Algeria
- American Samoa
- Andorra
- Angola
- Antigua and Barbuda
- Argentina
- Armenia

Select Select All Deselect Deselect All

Selected - 0

Next >>

# http://pwt.econ.upenn.edu/

query for pwt63 data - Windows Internet Explorer


http://pwt.econ.upenn.edu/php\_site/pwt63/pwt63\_form.php

penn world tables

Google Search

query for pwt63 data

AVG Yahoo! Search Total Protection AVG Info Get More



## PWT 6.3

**Step 1. highlight the countries you are interested in and add them to the list on the right. (help)**

- Afghanistan
- Albania
- Algeria
- Angola
- Antigua and Barbuda
- Argentina
- Armenia
- Australia
- Austria
- Azerbaijan

use *shift/ctrl* for multiple selections. [details](#)

Add Add All

**Step 2. check the countries you've selected, remove the ones you don't need. (help)**

0 countries are selected

Remove Remove All

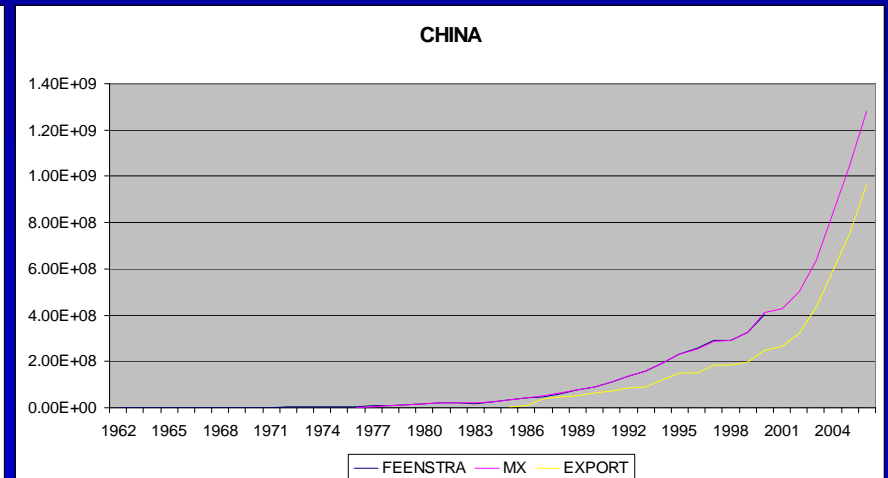
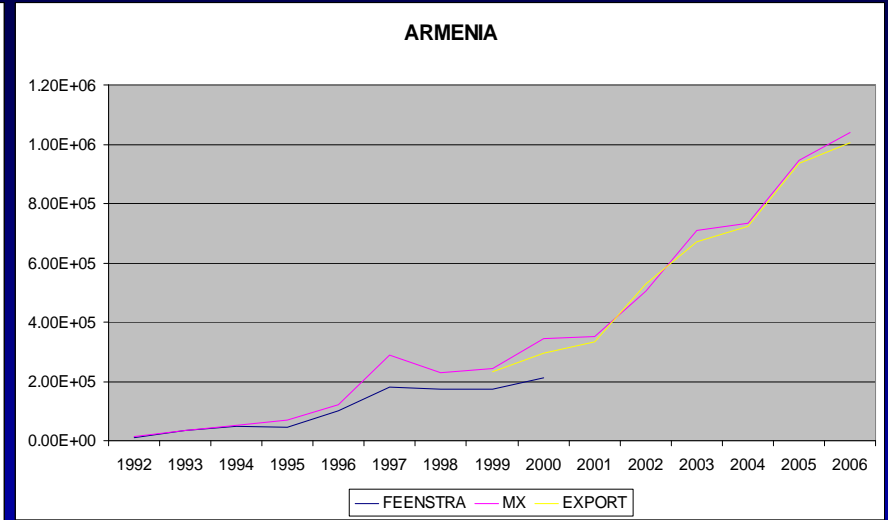
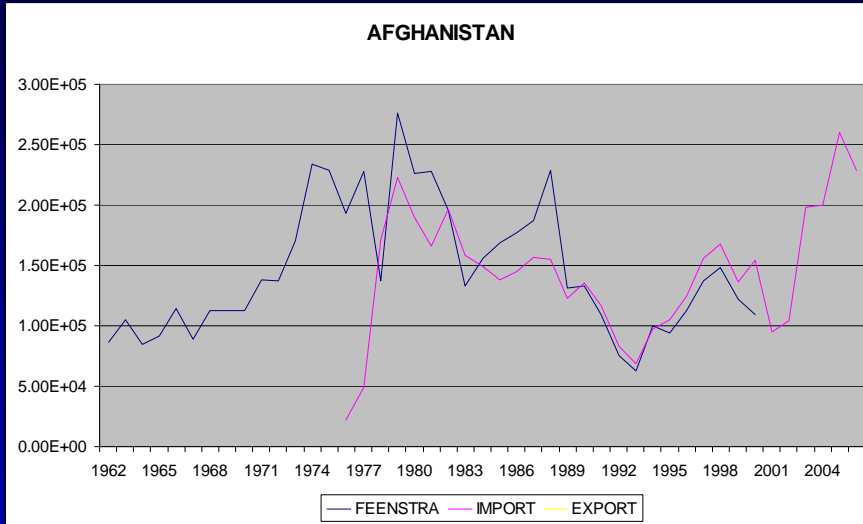
**Step 3. Select the variables that you are interested in. (help)**

Internet | Protected Mode: On 100%

materials for the dat... 21 Oct CI Research ... query for pwt63 dat... Microsoft Excel - Nu...

12:12 AM

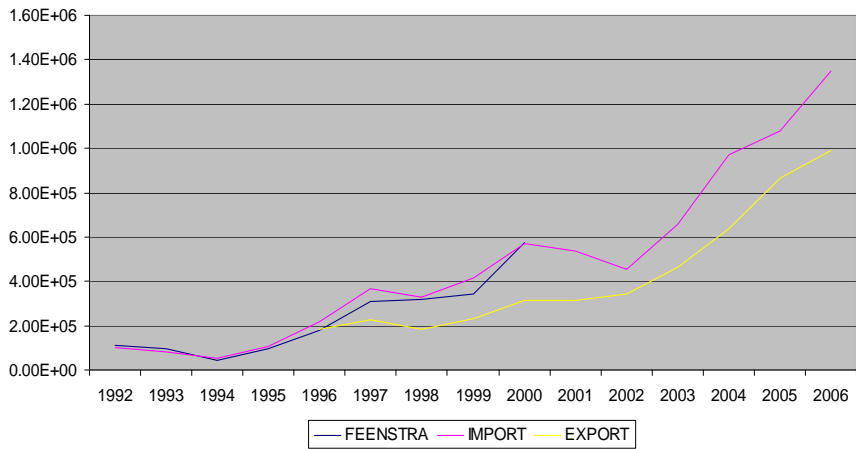
# Imports vs. Exports



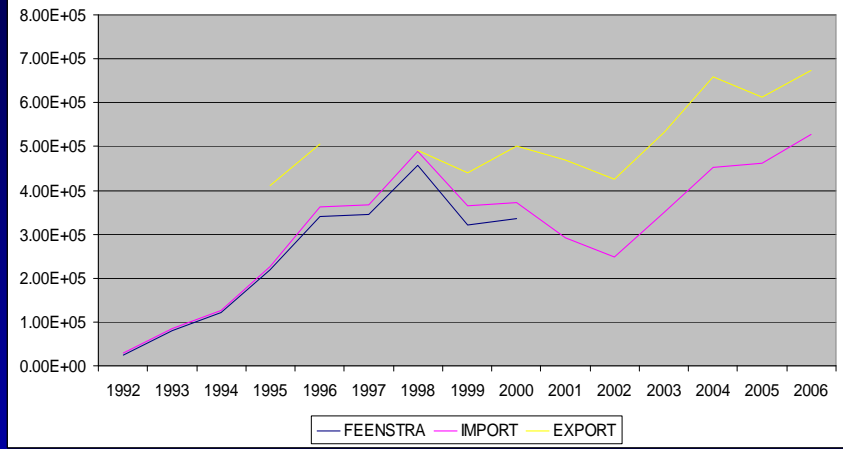


# Imports vs. Exports

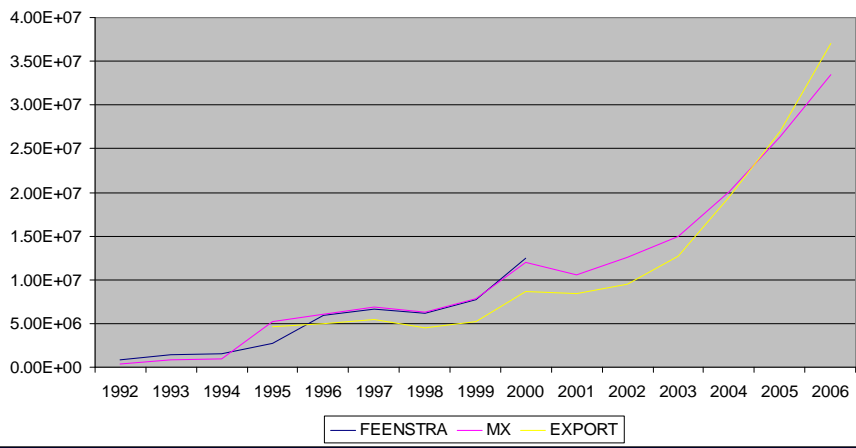
GEORGIA



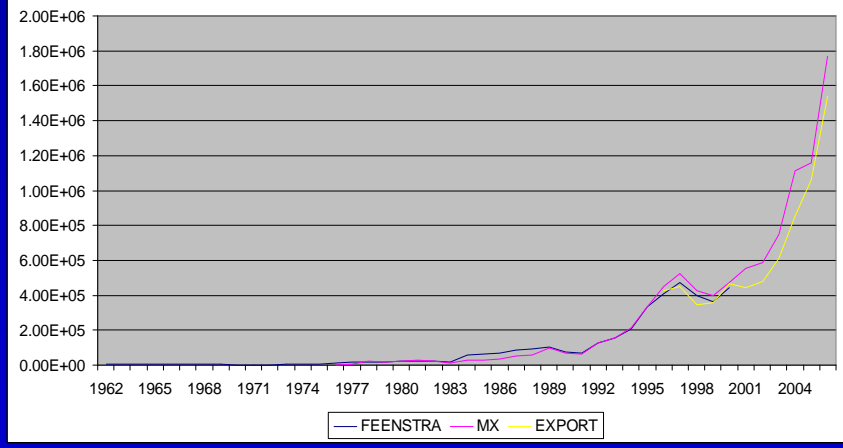
KYRGYZSTAN



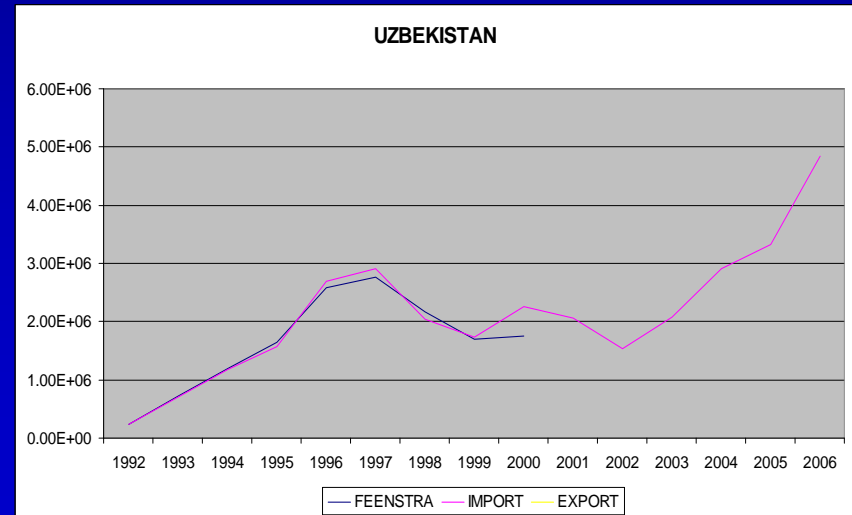
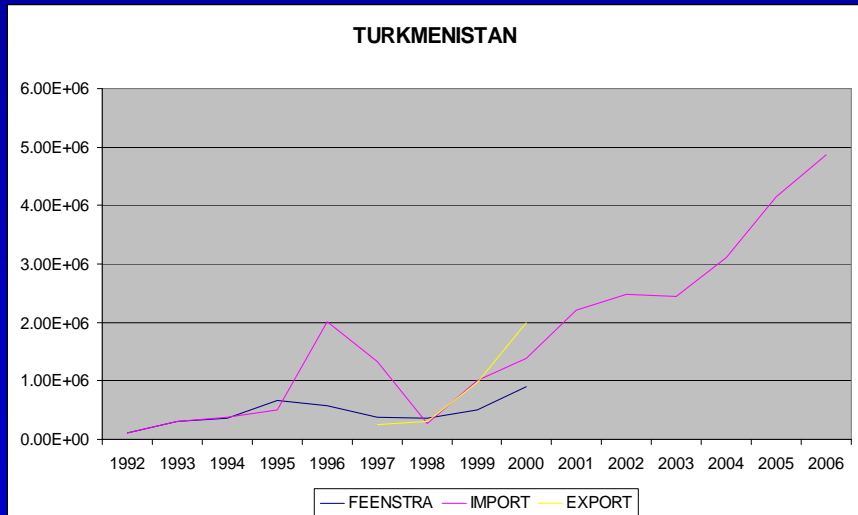
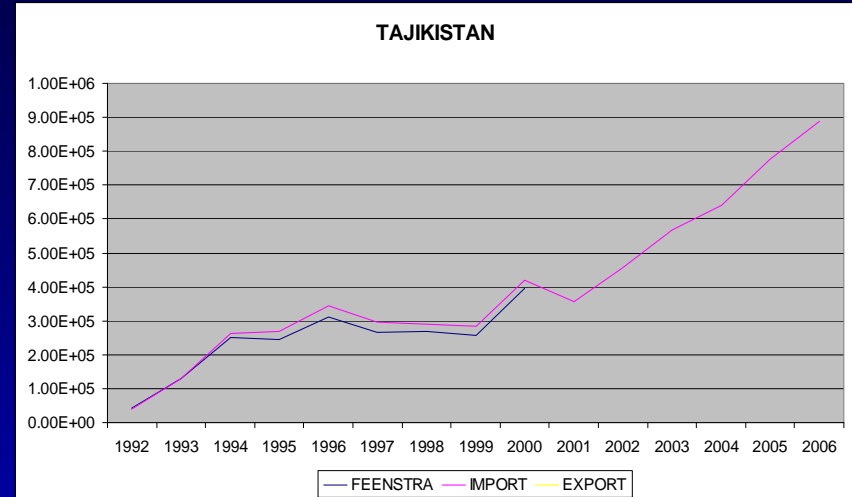
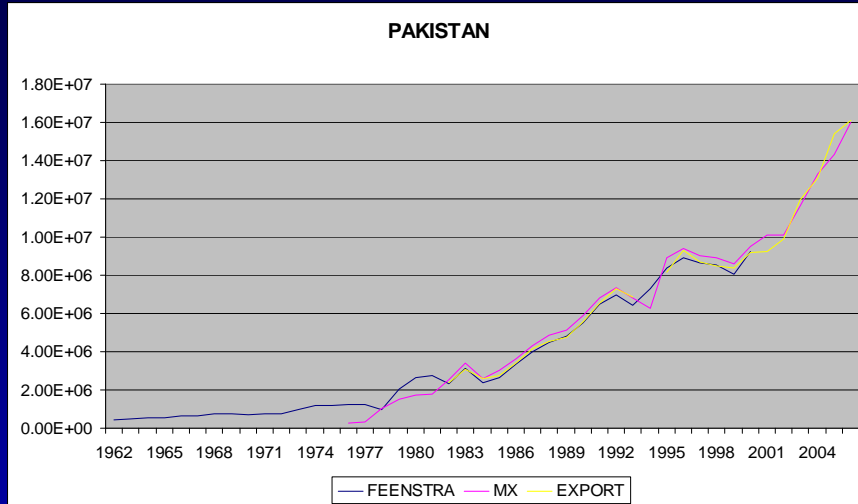
KAZAKHSTAN



MONGOLIA



# Imports vs. Exports



# KYRGYZ REPUBLIC

## (using import)

Commodity	PRODY	1992	1995	2000	2003	2005	2006
Parts, nes, and accessories of headings 873, 8743, 87454 or 8748	20,649			0.00	3.39	0.01	0.00
Glass, cast, rolled, etc, surface-ground, but no further worked	14,185		0.02	0.03	1.76	6.76	5.48
Other wheat and meslin, unmilled	13,308			0.00	1.37	0.06	0.08
Electric filament lamps and discharge lamps; arc-lamps	12,530	0.14	0.57	3.61	3.50	2.07	2.21
Plastic packing containers, lids, stoppers and other closures	12,452	0.03	0.04	1.41	1.64	2.68	2.28
Base metals, nes and cermets, unwrought (including waste and scrap)	12,052	0.15	8.72	0.20	1.11	0.17	0.61
Electric current	11,328		6.54	4.18	4.35	6.76	4.15
Leather of other bovine cattle and equine leather	9,643	0.36	0.04	0.05	1.43	3.14	2.79
Cast, rolled glass (flashed or wired), unworked, in rectangles	9,572		0.29	0.02	2.30	0.00	
Womens, girls, infants outerwear, textile, not knitted or crocheted; other outer garments of textile fabrics, not knitted, crocheted	8,517	0.00	0.10	0.12	1.34	1.47	1.05
Waste and scrap metal of iron or steel	7,987		0.21	1.20	7.89	11.12	4.40
Fruit, fresh or dried, nes	7,904	0.01	0.00	2.21	0.97	1.39	4.05
Other non-ferrous base metal waste and scrap, nes	7,432	2.83	18.80	15.05	7.06	4.48	7.93
Refined sugar etc	6,945			0.27	2.08	2.90	0.74
Men's and boys' outerwear, textile fabrics not knitted or crocheted; trousers, breeches and the like	6,769			0.54	1.55	1.13	1.28
Cement	4,479		0.38	0.56	1.52	2.87	4.05
Gold, non-monetary (excluding gold ores and concentrates)	3,498	19.85	0.02	29.21	8.22	0.58	0.00
Beans, peas, other leguminous vegetables, dried, shelled	3,298		0.02	0.09	1.32	2.23	4.48
Tobacco, not stripped	2,679		0.19	10.39	4.25	2.38	2.13
Raw cotton, excluding linters, not carded or combed	2,056	4.29	11.76	6.76	13.73	9.48	8.06
<b>sub-total</b>		<b>27.66</b>	<b>47.70</b>	<b>75.90</b>	<b>70.78</b>	<b>61.68</b>	<b>55.77</b>
<b>EXPY</b>		<b>10,467</b>	<b>9,549</b>	<b>7,094</b>	<b>8,860</b>	<b>9,437</b>	<b>9,261</b>

Note: Based on export share in 2003

# KYRGYZ REPUBLIC

## (using export)

Commodity	PRODY	1992	1995	2000	2003	2005	2006
Other parts and accessories, for vehicles of headings 722, 781-783	20,168		1.06	0.44	1.27	1.54	1.48
Special transactions, commodity not classified according to class	19,892		0.75	0.00	0.64	3.54	1.16
Glass, cast, rolled, etc, surface-ground, but no further worked	19,203		0.00	0.01	0.78	3.11	3.70
Salts of metallic acids; compounds of precious metals	13,674		0.00	0.06	0.80	0.00	0.00
Plastic packing containers, lids, stoppers and other closures	12,550		0.01	1.11	1.18	2.33	2.43
Electric filament lamps and discharge lamps; arc-lamps	12,497		2.45	2.31	2.93	2.55	2.61
Electric current	12,064		9.95	15.89	3.60	3.33	3.72
Bovine and equine hides, raw, whether or not split	9,630		0.00	0.77	0.80	0.50	0.18
Construction materials, of asbestos-cement or fibre-cements, etc	9,210		0.42	0.61	1.48	1.66	1.35
Waste and scrap metal of iron or steel	8,853		0.15	0.81	1.06	1.85	1.33
Other non-ferrous base metal waste and scrap, nes	8,317		3.83	4.91	0.83	0.62	0.86
Refined sugar etc	7,207		3.73	0.18	1.25	1.82	0.72
Men's and boys' outerwear, textile fabrics not knitted or crocheted; trousers, breeches and the like	6,798			0.21	0.92	0.70	0.79
Cement	4,510		0.50	0.39	1.10	2.13	3.16
Nuts edible, fresh or dried	4,429		0.07	0.16	0.62	0.28	0.59
Cast, rolled glass (flashed or wired), unworked, in rectangles	4,228		1.01	0.03	2.20	2.22	0.38
Beans, peas, other leguminous vegetables, dried, shelled	3,352		0.00	0.31	0.83	1.46	2.50
Gold, non-monetary (excluding gold ores and concentrates)	3,302		0.00	38.91	48.75	37.58	30.58
Tobacco, not stripped	2,701		3.14	5.90	2.21	1.71	1.42
Raw cotton, excluding linters, not carded or combed	2,063		5.25	6.38	7.97	6.54	5.28
	<b>sub-total</b>		<b>32.32</b>	<b>79.39</b>	<b>81.22</b>	<b>75.47</b>	<b>64.24</b>
	<b>EXPY</b>		<b>11,305</b>	<b>7,514</b>	<b>6,455</b>	<b>7,918</b>	<b>8,597</b>

Note: Based on export share in 2003